

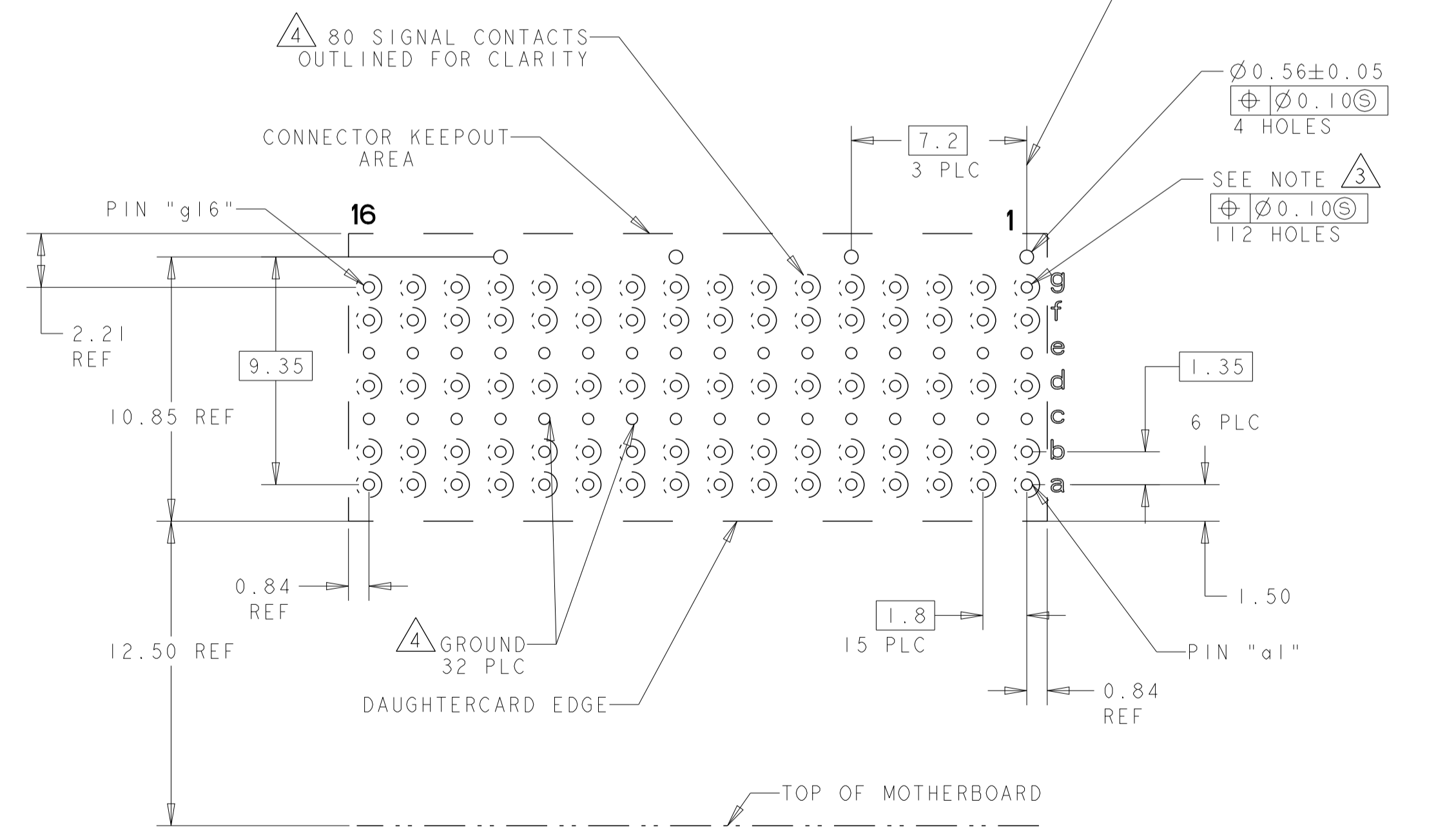
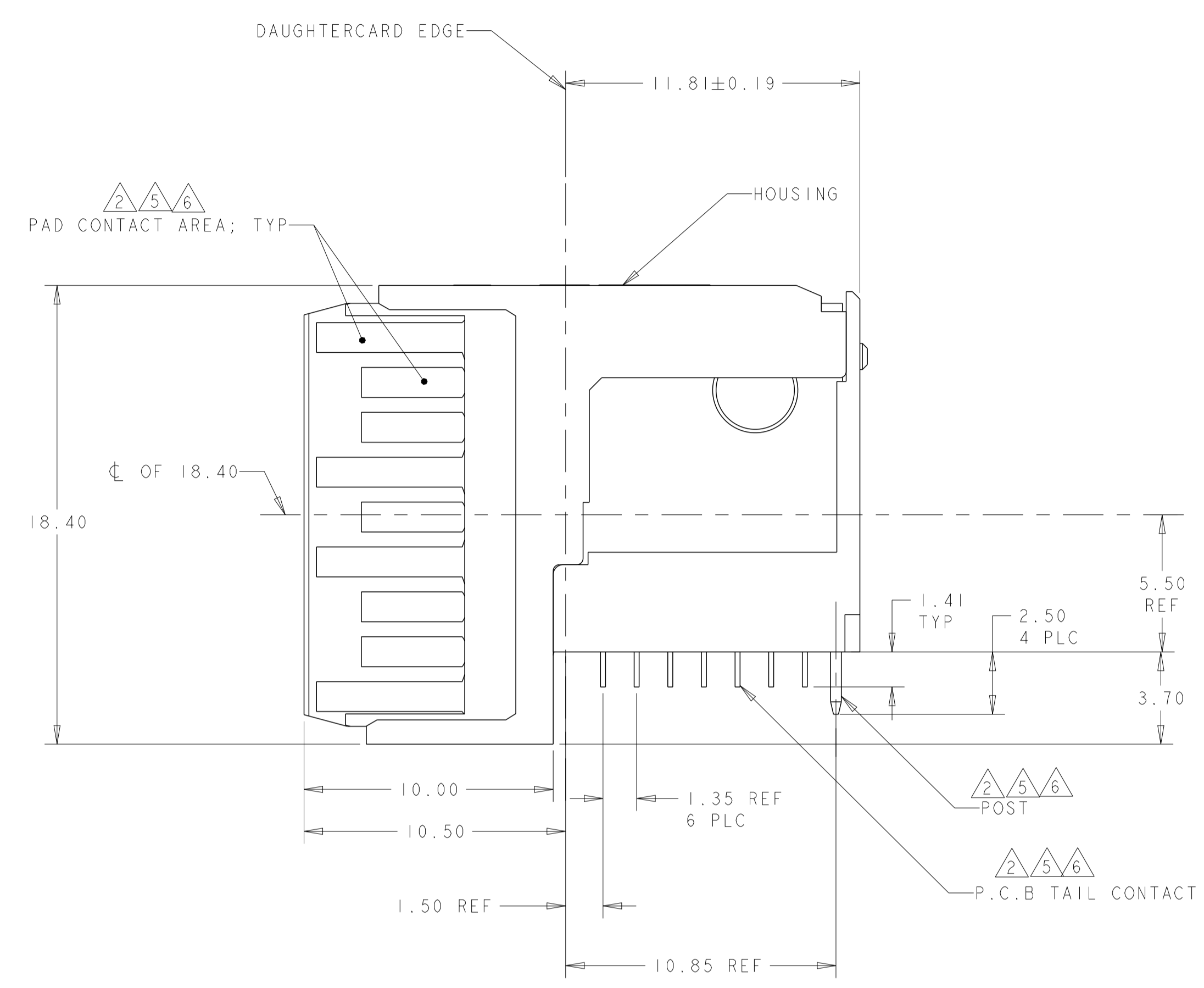
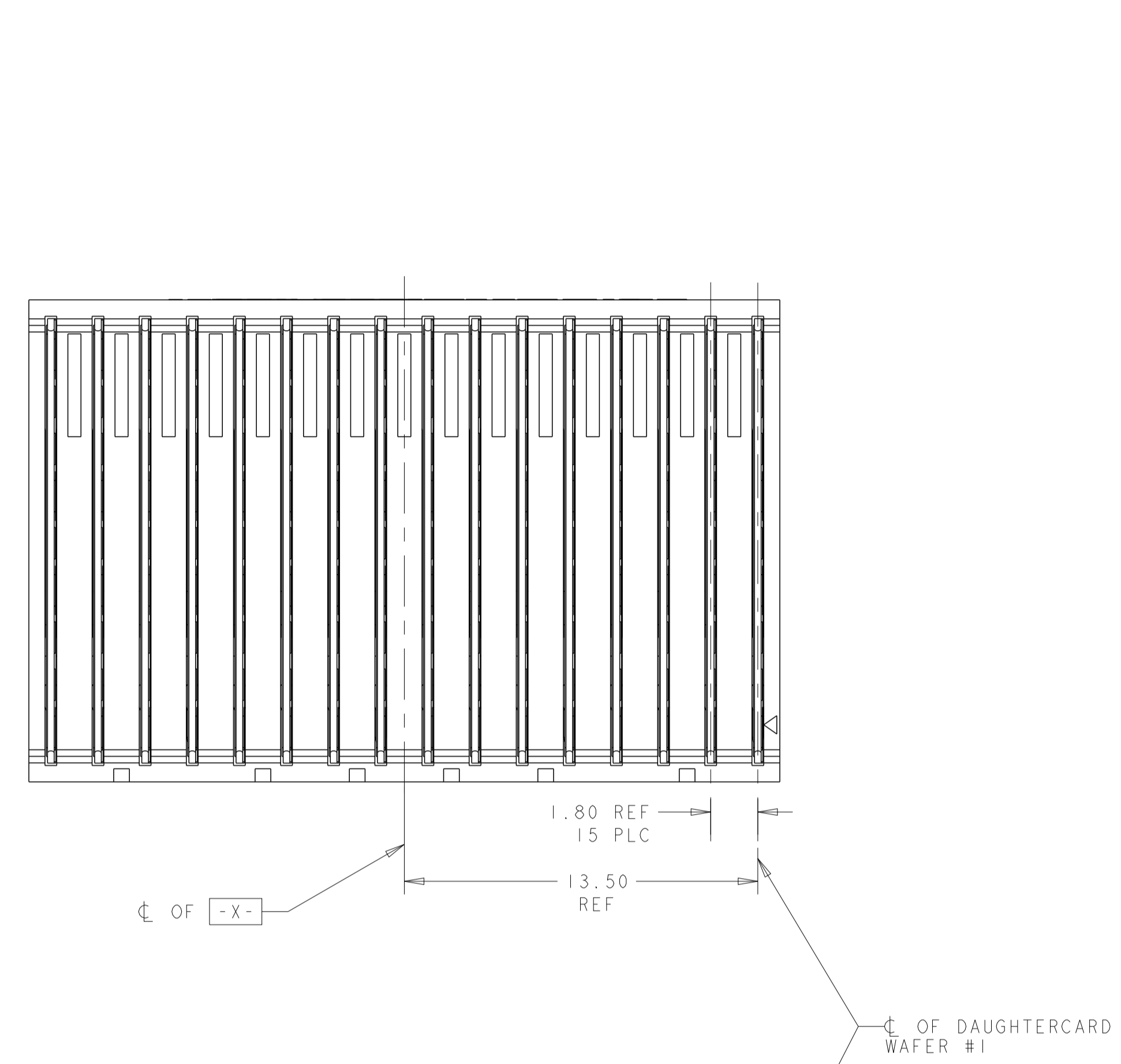
| REVISIONS |     |                           |           |          |
|-----------|-----|---------------------------|-----------|----------|
| P         | LTN | DESCRIPTION               | DATE      | OWN APVD |
| F         |     | REVISED PER ECO-21-003080 | 15DEC2021 | LN DH    |

- 1 HOUSING: LCP, UL94V0, COLOR: BLACK.  
CONTACT: PHOSPHOR BRONZE.  
POST: BRASS WIRE
- 2 CONTACT: 1.27µm MIN GOLD IN PAD CONTACT AREA,  
1.27µm MIN TIN-LEAD (93/7) ON PCB TAIL  
OVER 1.27µm MIN NICKEL OVER ALL.  
POST 1.27µm MIN NICKEL PLATED.
- 3 PLATED THROUGH HOLE PER 114-13056, FIGURE 4 OR  
114-163004; FIGURE 10
- 4 SEE TABLE 1 FOR INTERCONNECTIONS TO  
BACKPLANE CONNECTOR.
- 5 CONTACT: 1.27µm MIN GOLD IN PAD CONTACT AREA,  
1.27µm MIN TIN ON PCB TAIL OVER 1.27µm MIN.  
NICKEL OVER ALL.  
POST: 1.27µm MIN NICKEL PLATED.
- 6 CONTACT: 1.27µm MIN GOLD IN PAD CONTACT AREA,  
1.27µm MIN TIN-LEAD (60/40) ON PCB TAIL  
OVER 1.27µm MIN NICKEL OVER ALL.  
POST 1.27µm MIN NICKEL PLATED.

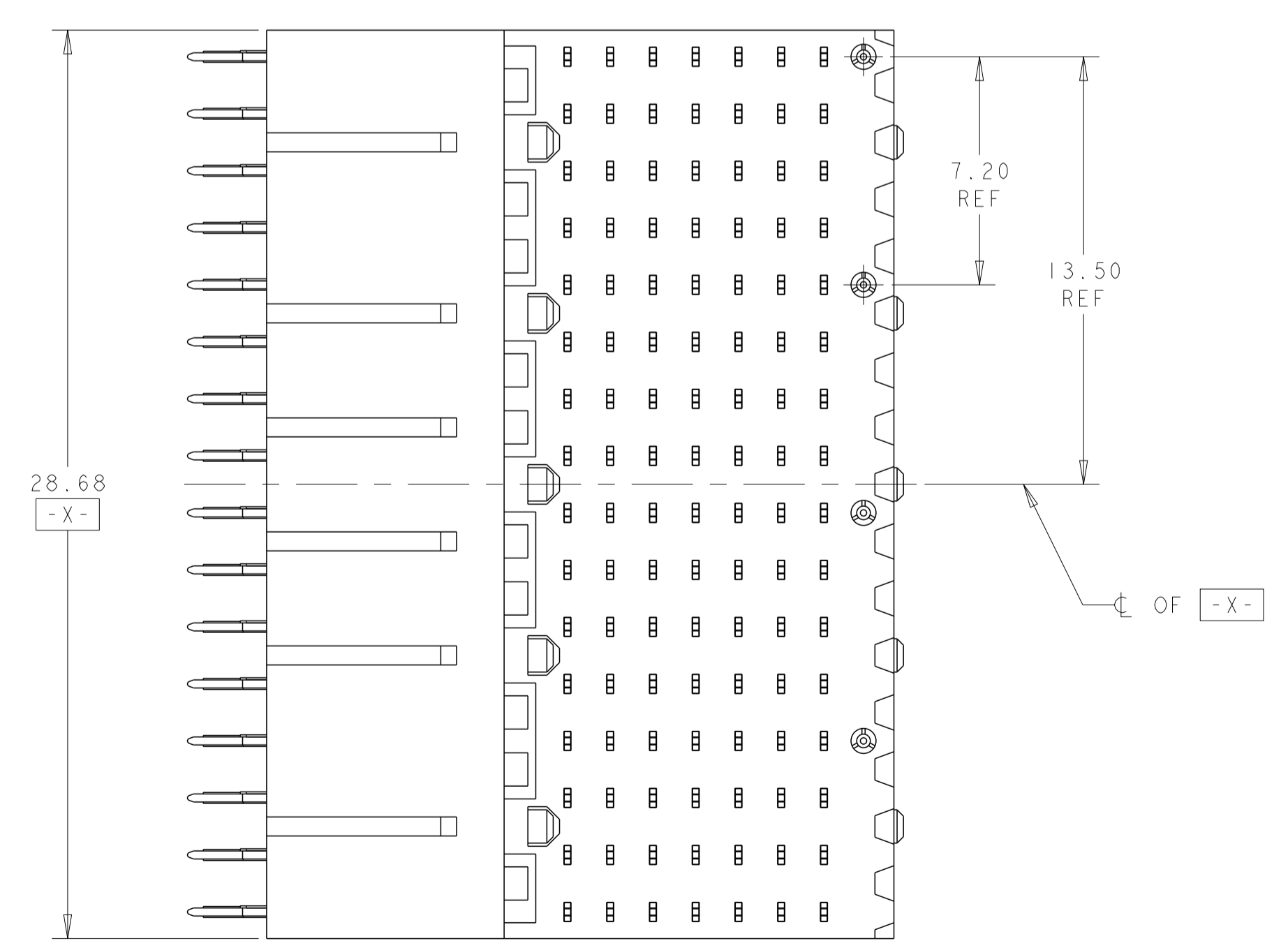
TABLE 1  
INTERCONNECTIONS WITH BACKPLANE CONNECTOR 2102736-1

| TYPICAL INTERCONNECTIONS FOR EACH COLUMN (WAFER): 1-16 |                            |                         |
|--|----------------------------|-------------------------|
| CONTACT USAGE  | DAUGHTERCARD CONNECTOR PIN | BACKPLANE CONNECTOR PIN |
| SIGNAL   | ax                         | bx                      |
| SIGNAL   | bx                         | cx                      |
| SIGNAL   | dx                         | ex                      |
| SIGNAL   | fx                         | gx                      |
| SIGNAL   | gx                         | hx                      |
| GROUND   | cx, ex,<br>(ALL COMMONED)  | ax, dx,<br>fx, ix       |

NOTE: "x" DESIGNATES THE COLUMN NUMBER



PC BOARD LAYOUT  
(CONNECTOR SIDE)  
SEE SHEET 2 FOR RTM  
SCALE 5:1



|         |           |
|---------|-----------|
| 6       | 2102847-4 |
| 5       | 2102847-2 |
| 2       | 2102847-1 |
| PLATING | PART NO   |

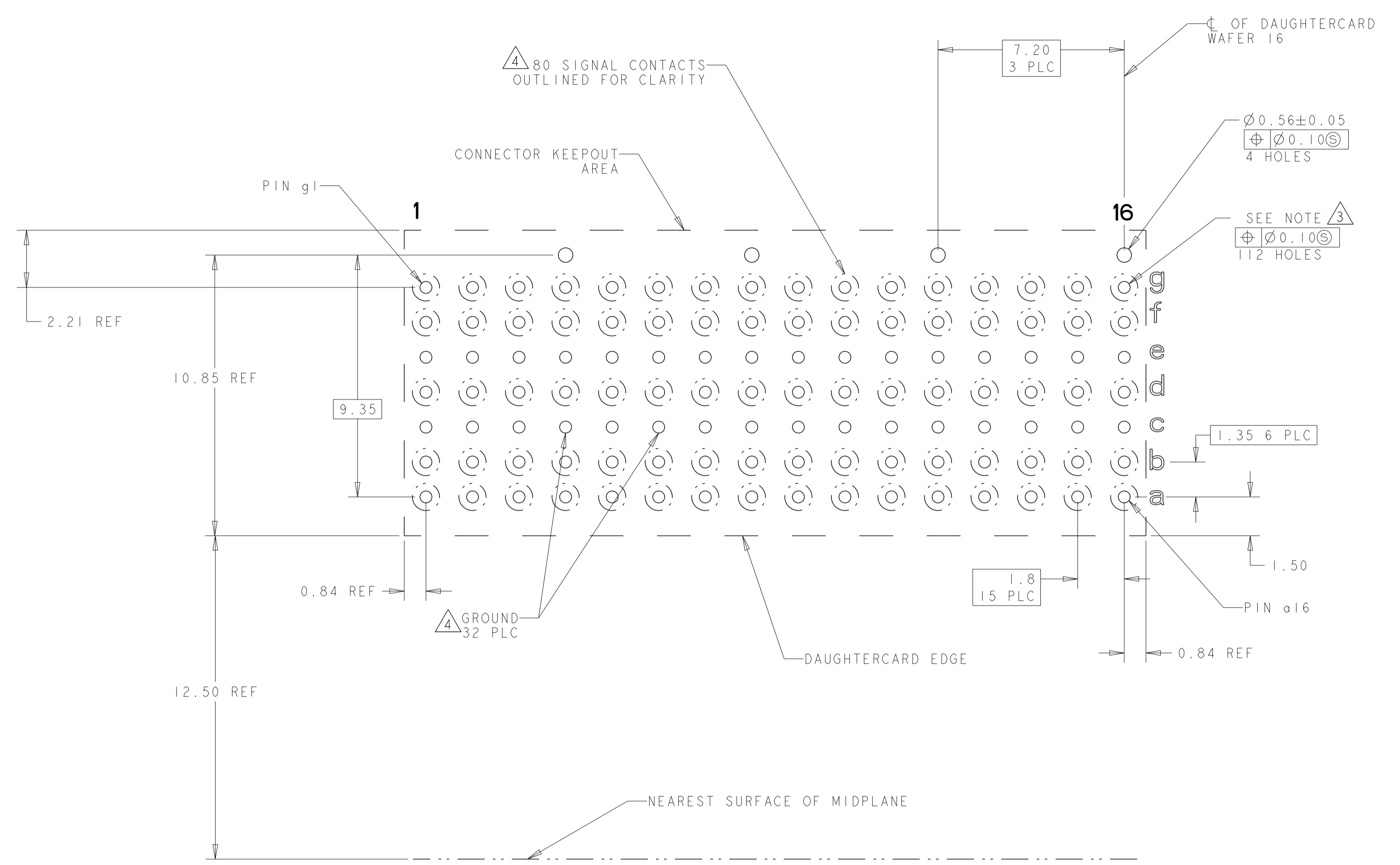
THIS DRAWING IS A CONTROLLED DOCUMENT.

|             |   |                          |                             |                             |  |
|-------------|---|--------------------------|-----------------------------|-----------------------------|--|
| DIMENSIONS: | TOLERANCES UNLESS OTHERWISE SPECIFIED:  | OWN: K. MILLER 29NOV2011 | CHK: K. THACKSTON 12JAN2012 | APVD: M. McALONIS 12SEP2012 | NAME: RIGHT-ANGLE PLUG ASSEMBLY, 7 ROW, CENTER, 20.3mm, MULTIGIG RT 2-R SINGLE ENDED, DAUGHTERCARD CONNECTOR |
| mm          | 0 PLC ±0.5<br>1 PLC ±0.5<br>2 PLC ±0.13<br>3 PLC ±0.13<br>4 PLC ±0.13<br>ANGLES ±1° | PRODUCT SPEC: 108-2072   | APPLICATION SPEC: 114-13056 | SIZE: 114-13056             | RESTRICTED TO: CUSTOMER DRAWING  |
| MATERIAL:   | FINISH:   | WEIGHT: 10.33g           | SCALE: 5:1                  | SHEET 1 OF 2                | REV F  |

SEE TABLE

| REVISIONS |     |             |      |      |
|-----------|-----|-------------|------|------|
| P         | LTN | DESCRIPTION | DATE | APVD |
| -         | -   | SEE SHEET 1 | -    | -    |
|           |     |             |      |      |
|           |     |             |      |      |

### REAR TRANSITION MODULE APPLICATION



PC BOARD REAR TRANSITION MODULE  
 SCALE 8:1

|  |  |                                  |  |
|--|--|----------------------------------|--|
| THIS DRAWING IS A CONTROLLED DOCUMENT. |  | DWN<br>K. MILLER<br>29NOV2011    | TE Connectivity  |
| DIMENSIONS: mm                         |  | CHK<br>K. THACKSTON<br>12JAN2012 |  |
| TOLERANCES UNLESS OTHERWISE SPECIFIED: |  | APVD<br>M. McALONIS<br>12SEP2012 | NAME<br>RIGHT-ANGLE PLUG ASSEMBLY, 7 ROW,<br>CENTER, 20.3mm, MULTIGIG RT 2-R<br>SINGLE ENDED, DAUGHTERCARD CONNECTOR |
|  |  | PRODUCT SPEC<br>108-2072         | RESTRICTED TO  |
|  |  | APPLICATION SPEC<br>114-13056    | SIZE CAGE CODE DRAWING NO  |
| MATERIAL                               |  | WEIGHT<br>10.33g                 | A100779C=2102847   |
| FINISH<br>SEE TABLE                    |  | CUSTOMER DRAWING                 | SCALE 5:1 SHEET 2 OF 2 REV F   |