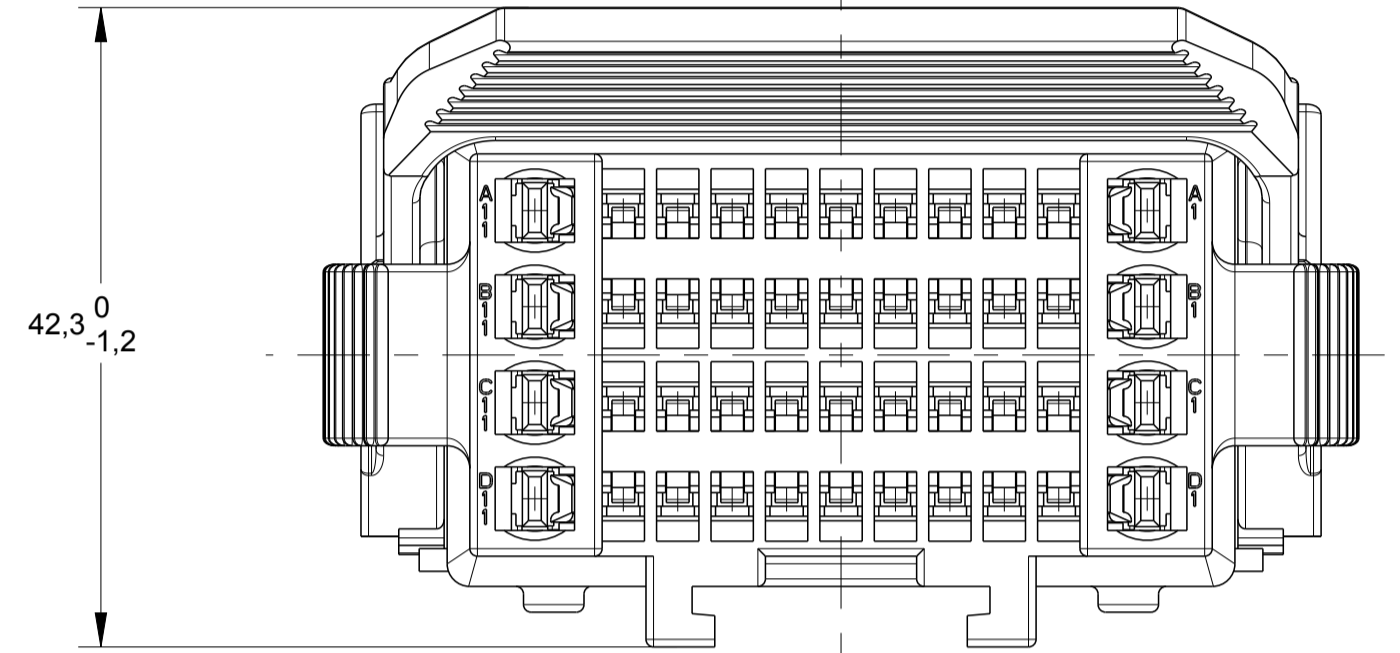
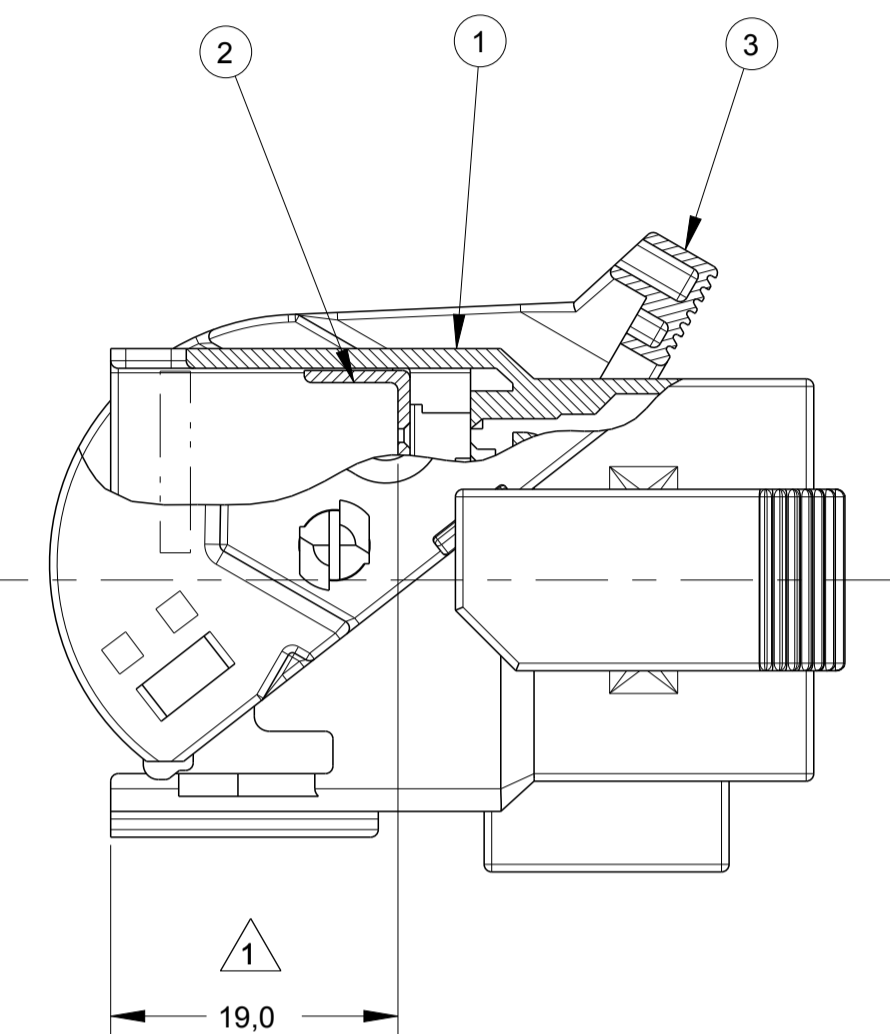
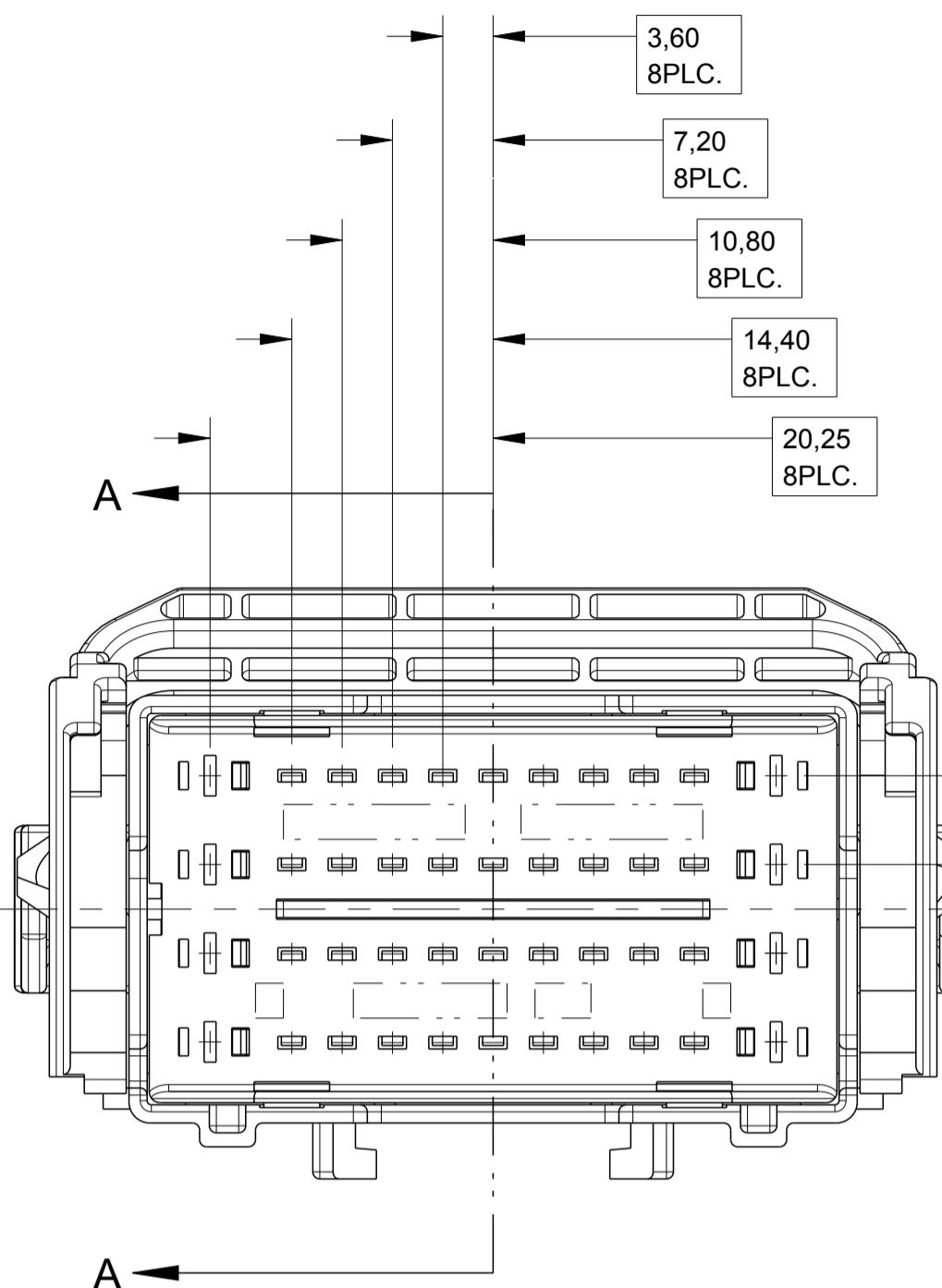


LOC	DIST	REVISIONS			
AP	-	REV	DATE	DWN	APVD
A		RELEASED BY ECO-10-008612	23APR2011	RKTL	CGM
B		REVISED BY ECO-11-003721	21FEB2011	PP	GO
C		REVISED DESIGN ECO-11-007672	14APR2011	NCL	GO
C1		REVISED DESIGN ECO-12-018872	06NOV2012	FC	GB

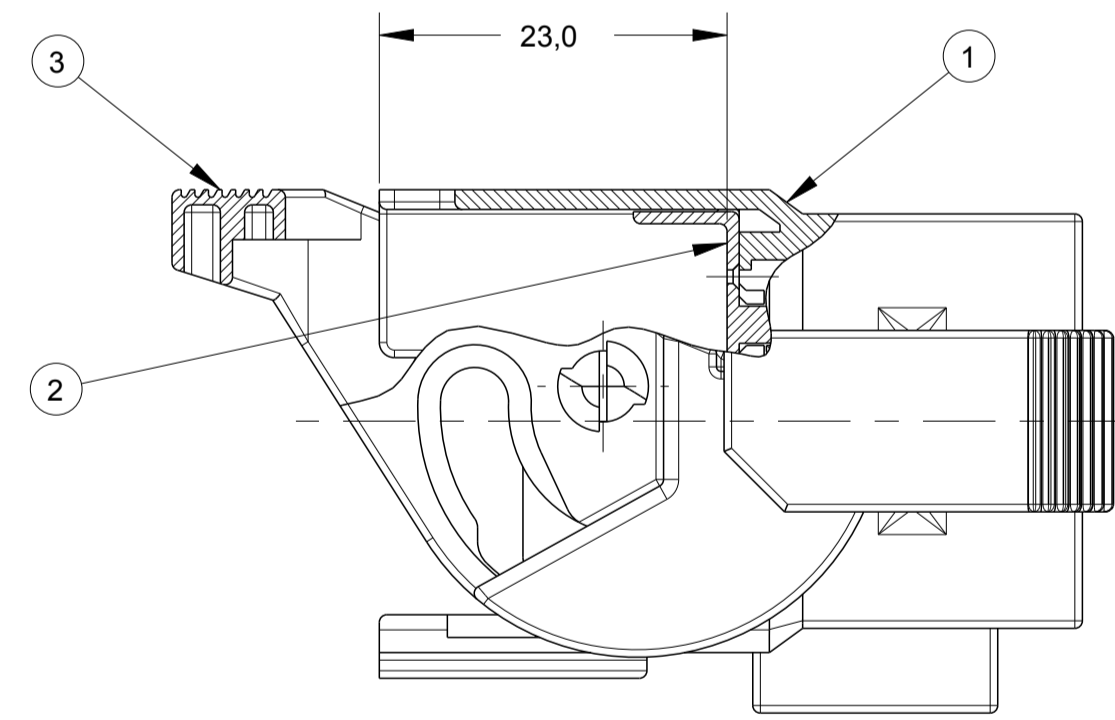
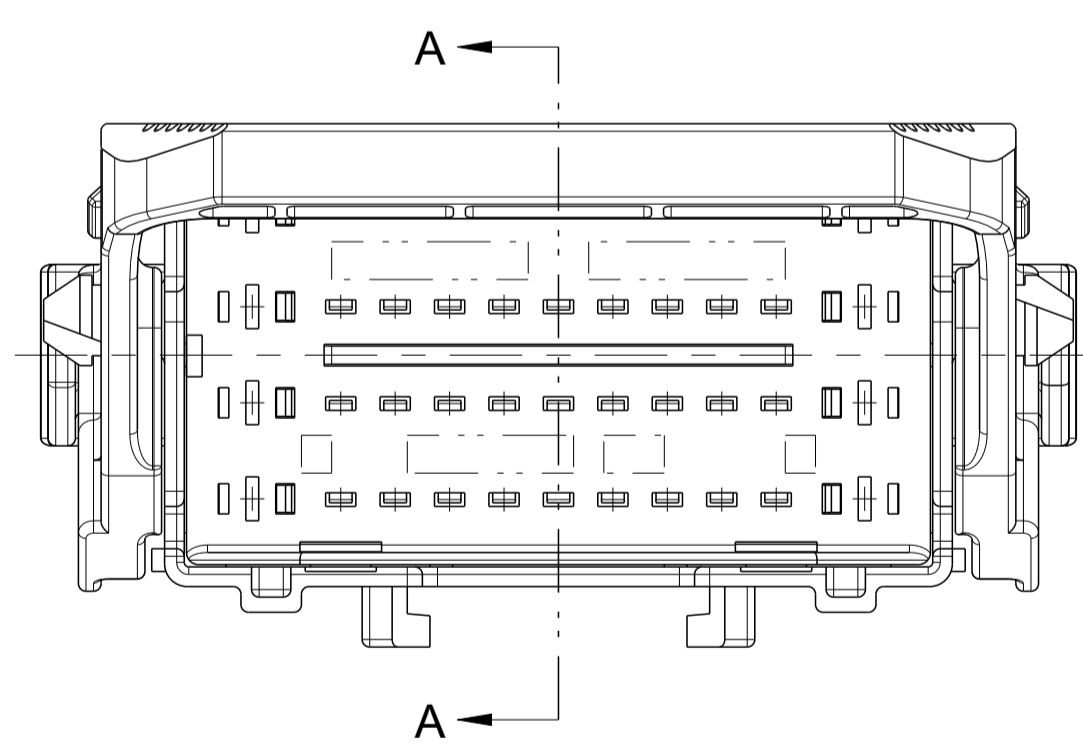


GRAVAÇÕES MARKINGS	
LOGOTIPO TE	TE LOGO
CÓDIGO PAÍS PRODUTOR	MANUFACTURER COUNTRY CODE
NOMENCLATURA MATERIAL	MATERIAL NOMENCLATURE
NÚMERO COMPONENTE TE	TE COMPONENT NUMBER
NÚMERO CAVIDADE	CAVITY NUMBER
CÓDIGO DATADOR ANOMÉS	DATE CODE YEAR/MONTH
IDENTIFICAÇÃO CIRCUITO	CIRCUIT IDENTIFICATION
REV+ LETRA REV DA PEÇA	REV + PART REV LETTER

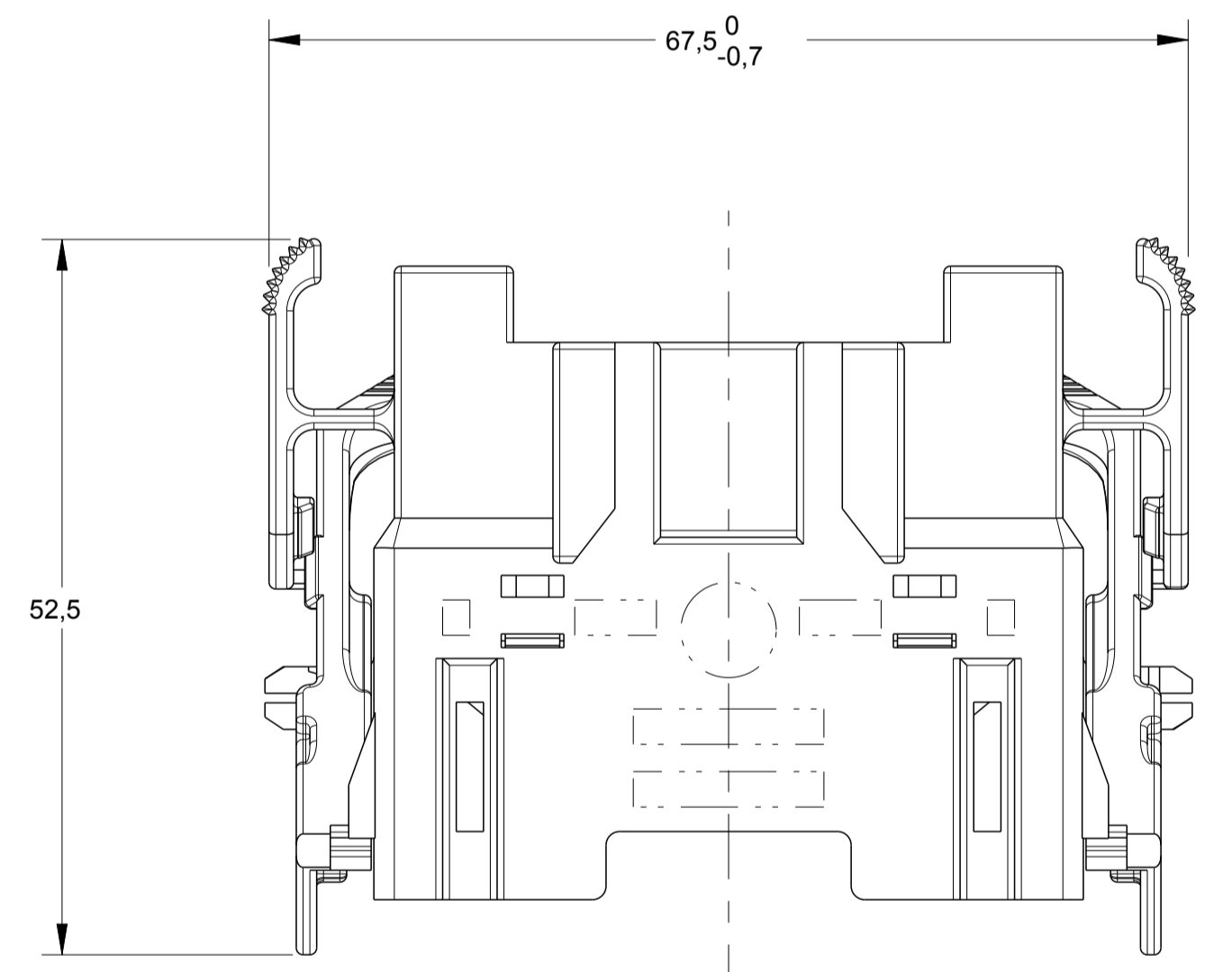


SECTION A-A

T.P.A. SPACER AT FINAL POSITION (AFTER CONTACTS INSERTION).
 LEVER AT FINAL POSITION (AFTER MATING PART CONECTION).



SECTION A-A



- 1- DEVE SER FORNECIDO COM O T.P.A NA CONDIÇÃO DE PRÉ TRAVAMENTO.
- 2 - TERMINAIS TAB UTILIZADOS:
1,8 - MULTI LOCK 282377-1, 282378-1, 282379-1
2,8 - JPT, VIDE DESENHO C 1355364, 1-968946-1
- 3- CONTRA PEÇA: VEJA DESENHO TE PN 1989065
- 4 - O PRODUTO DEVE ESTAR DE ACORDO COM A ESPECIFICAÇÃO GMW 3191 TESTE DE CONECTOR E ESPECIFICAÇÃO DE VALIDAÇÃO REVISÃO AGOSTO,2006 EXCETO TESTES:

ITEM 4.26 - TESTE DE CORROSÃO, NÃO APLICAVEL PARA AMOSTRAS NA POSIÇÃO VERTICAL.

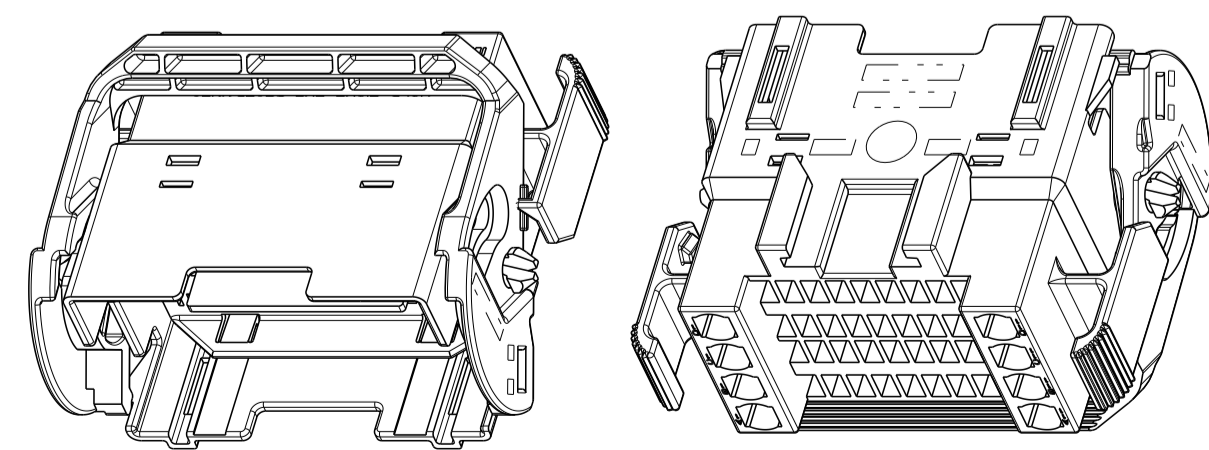
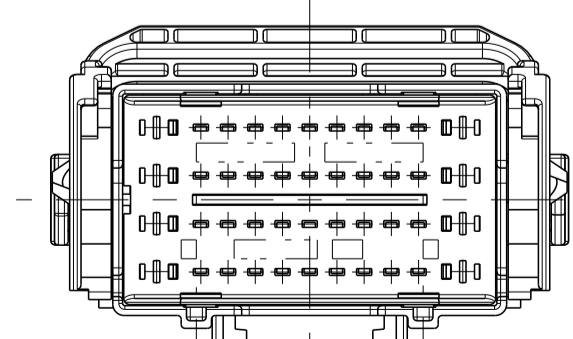
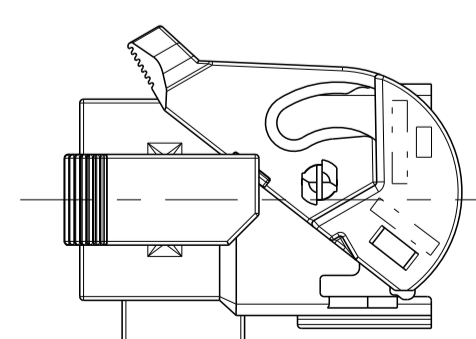
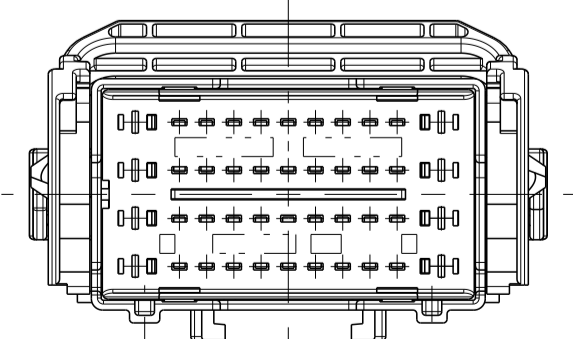
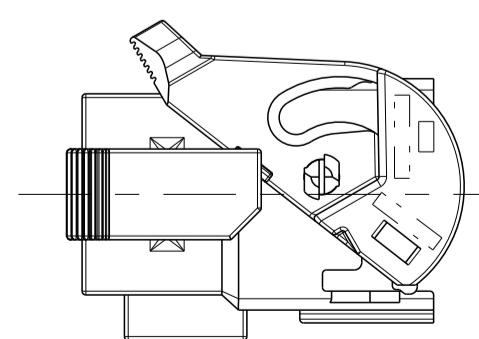
SEQ. 24A - DRY CIRCUIT APÓS TESTES DE CHOQUE MECÂNICO E VIBRAÇÃO, ONDE PARA OS TERMINAIS JPT, QUANDO APLICADAS BAIXAS CORRENTES <=10A DEVERÁ SER UTILIZADO CONTATO COM TRATAMENTO SUPERFICIAL EM PRATA (Ag).
- 1 - MUST BE SUPPLIED WITH T.P.A IN PRE LOCK POSITION.
- 2 - TAB MATING CONTACTS:
1,8 - MULTI LOCK 282377-1, 282378-1, 282379-1
2,8 - JPT, SEE DRAWING C 1355364, 1-968946-1
- 3 - COUNTER PART: SEE DRAWING TE PN 1989065
- 4 - PART MUST TO COMPLY WITH GM SPECIFICATION GMW 3191 CONNECTOR TEST AND VALIDATION SPECIFICATION REV. AUGUST,2006 EXCEPT TESTS:

ITEM 4.26 - CORROSION TEST, NOT APPLICABLE FOR SAMPLES IN THE VERTICAL POSITION.

SEQ. 24A - DRY CIRCUIT RESISTANCE AFTER MECHANICAL SHOCK AND VIBRATION TEST: WHEN APPLIED LOW CORRENT <=10A FOR JPT TERMINALS, MUST TO BE USE SURFACE PRE-SILVER PLATED (Ag).

1989068-1 (BLACK HOUSING)
SCALE 1:1

1989068-2 (GRAY HOUSING)
SCALE 1:1



PERSPECTIVE VIEWS
SCALE 1:1

REQ.PER ASSY	ITEM	DESCRIPTION	MATERIAL	FINISH
1	1	3 LEVER	PA 6.6 + 25% F.V./G.F.	CINZA / GRAY
1	1	2 T.P.A SPACER	PBT	VIOLETA / VIOLET
1	-	1 HSG. 44 POSN. 0.70 MTL TAB + 2.8 JPT TAB	PBT	CINZA / GRAY
-	1	1 HSG. 44 POSN. 0.70 MTL TAB + 2.8 JPT TAB		PRETO / BLACK

THIS DRAWING IS A CONTROLLED DOCUMENT.		DWN: A.PERUSSI 15JUN2007	TE Connectivity HOUSING ASSY 44 POSN. TAB 0.70 MULTILOCK TAB + 2.8 JPT TAB
DIMENSIONS: mm		CHK: P.L.FARIA 15JUN2007	
TOLERANCES UNLESS OTHERWISE SPECIFIED:		APVD: C.G.MARTINS 15JUN2007	
0 PLC ±		NAME: NAME	
1 PLC ±0,3		PRODUCT SPEC	108-37089
2 PLC ±		APPLICATION SPEC	411-37011
3 PLC ±		FINISH	411-37011
4 PLC ±		WEIGHT	A1
MATERIAL SEE TABLE		CUSTOMER DRAWING	SCALE 2:1 SHEET 1 OF 1 REV C1