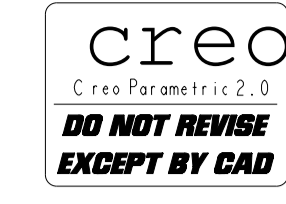


LOC		DIST		REVISIONS			
P	LTN	DESCRIPTION	DATE	DMN	APVD		
A		RELEASED BY ECO-10-008612	23APR2010	RKTL	CGM		
B		REVISED BY ECO-11-003721	21FEB2011	PP	GO		
C		REVISED DESIGN ECO-11-007672	14APR2011	NCL	GO		
C1		REVISED BY ECO-13-016286	17OCT2013	LAA	FCF		



GRAVAÇÕES MARKINGS	
LOGOTIPO TE	TE LOGO
CÓDIGO PAÍS PRODUTOR	MANUFACTURER COUNTRY CODE
NOMENCLATURA MATERIAL	MATERIAL NOMENCLATURE
NÚMERO COMPONENTE TE	TE COMPONENT NUMBER
NÚMERO CAVIDADE	CAVITY NUMBER
CÓDIGO DATADOR ANO/MÊS	DATE CODE YEAR/MONTH
IDENTIFICAÇÃO CIRCUITO	CIRCUIT IDENTIFICATION
REV+ LETRA REV. DA PEÇA	REV.+ PART REV. LETTER

- 1 - DEVE SER FORNECIDO COM O T.P.A NA CONDIÇÃO DE PRÉ TRAVAMENTO.
- 2 - TERMINAIS RECEPTÁCULOS UTILIZADOS:
1,8 - MULTI LOCK 282374-1, 282375-1, 282376-1
2,8 - JPT, VIDE DESENHO C 1355047
- 3- CONTRA PEÇA: VEJA DESENHO TE PN 1989068
- 4 - O PRODUTO DEVE ESTAR DE ACORDO COM A ESPECIFICAÇÃO GMW 3191 TESTE DE CONECTOR E ESPECIFICAÇÃO DE VALIDAÇÃO REVISÃO AGOSTO,2006 EXCETO TESTES:

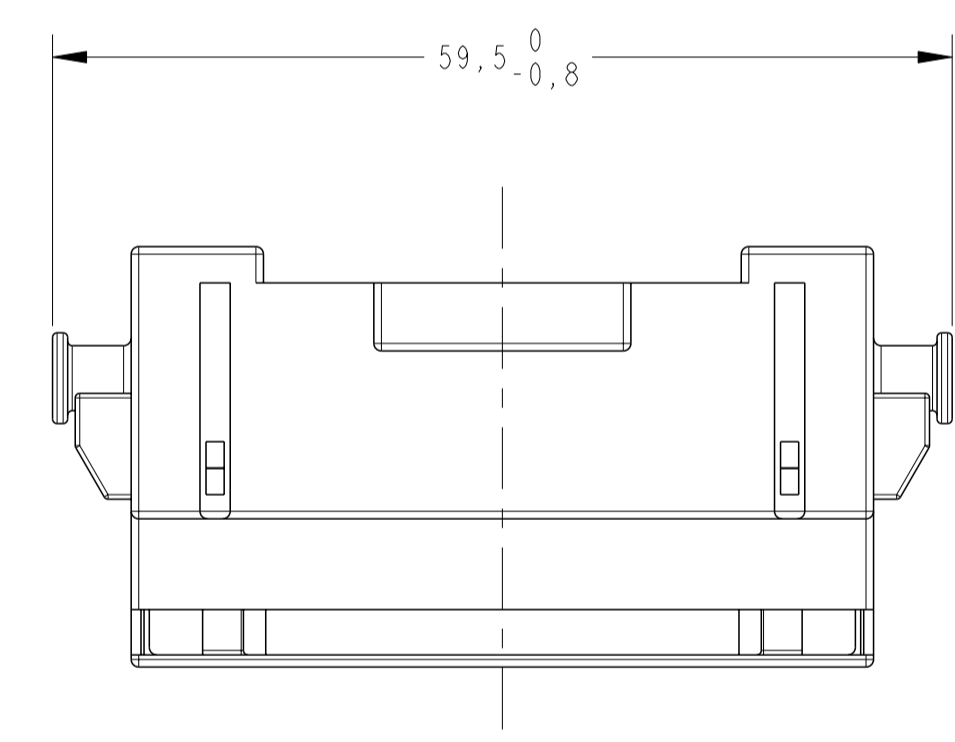
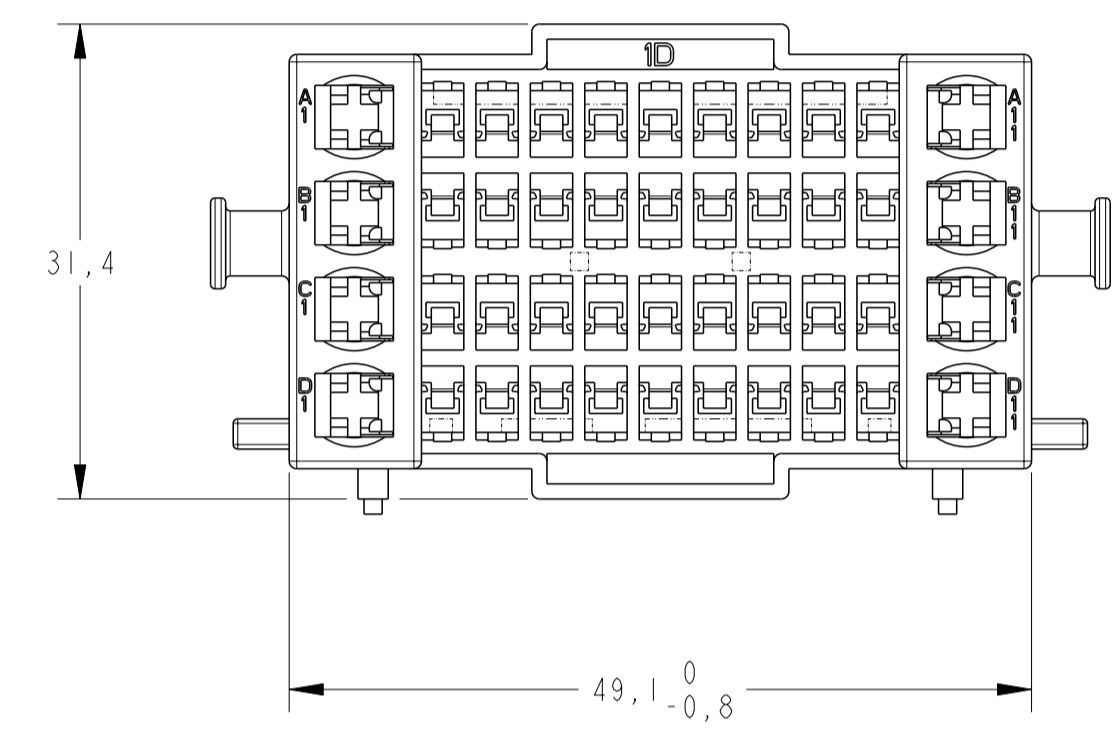
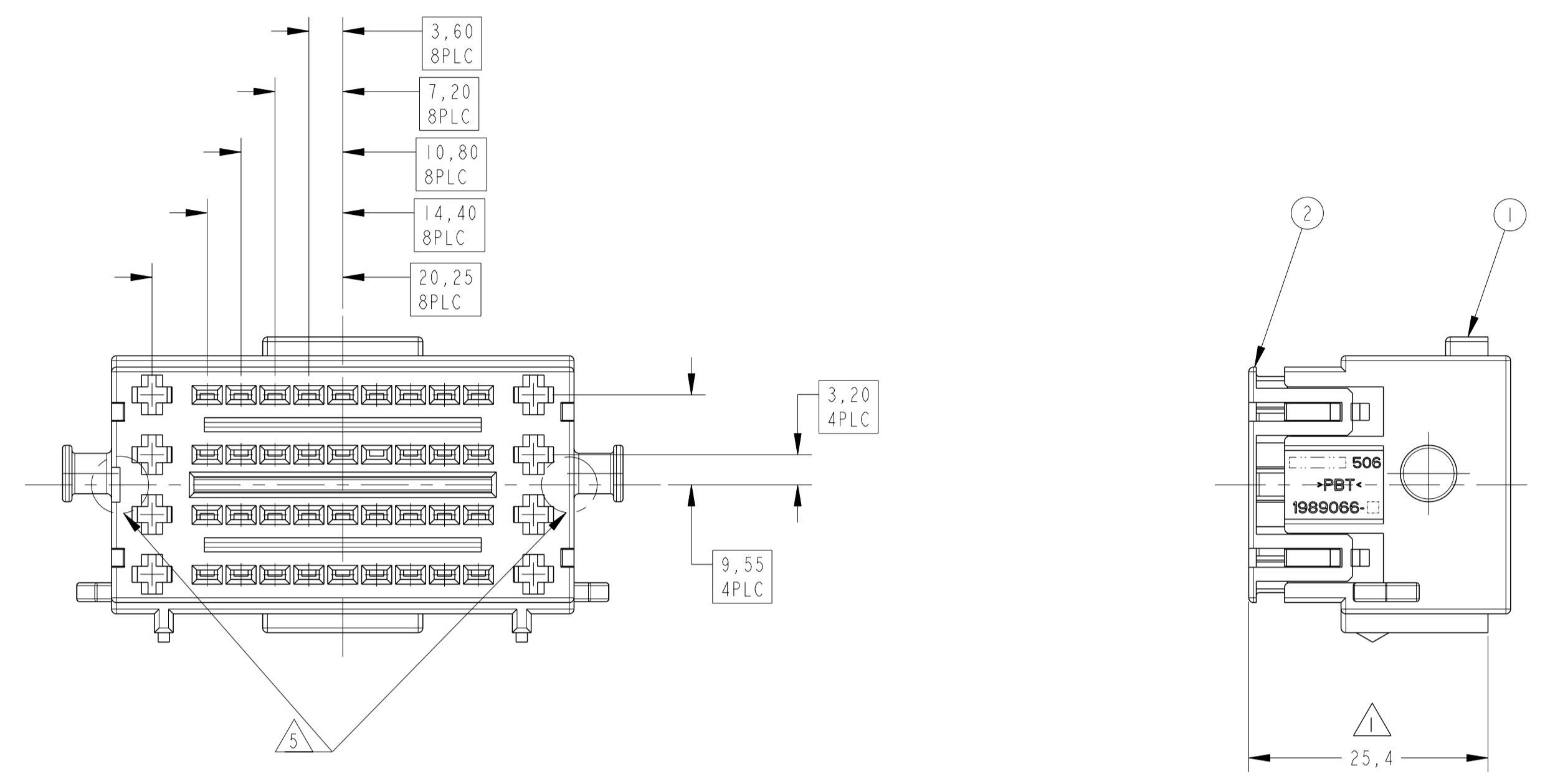
ITEM 4.26 - TESTE DE CORROÇÃO, NÃO APLICAVEL PARA AMOSTRAS NA POSIÇÃO VERTICAL.

SEQ. 24A - DRY CIRCUIT APÓS TESTES DE CHOQUE MECÂNICO E VIBRAÇÃO; ONDE PARA OS TERMINAIS JPT, QUANDO APLICADAS BAIXAS CORRENTES <=10A DEVERÁ SER UTILIZADO CONTATO COM TRATAMENTO SUPERFICIAL EM PRATA (Ag).
- 5- DETALHE PARA INJEÇÃO UNICO PONTO VISIVEL NO LADO DIREITO OU ESQUERDO.

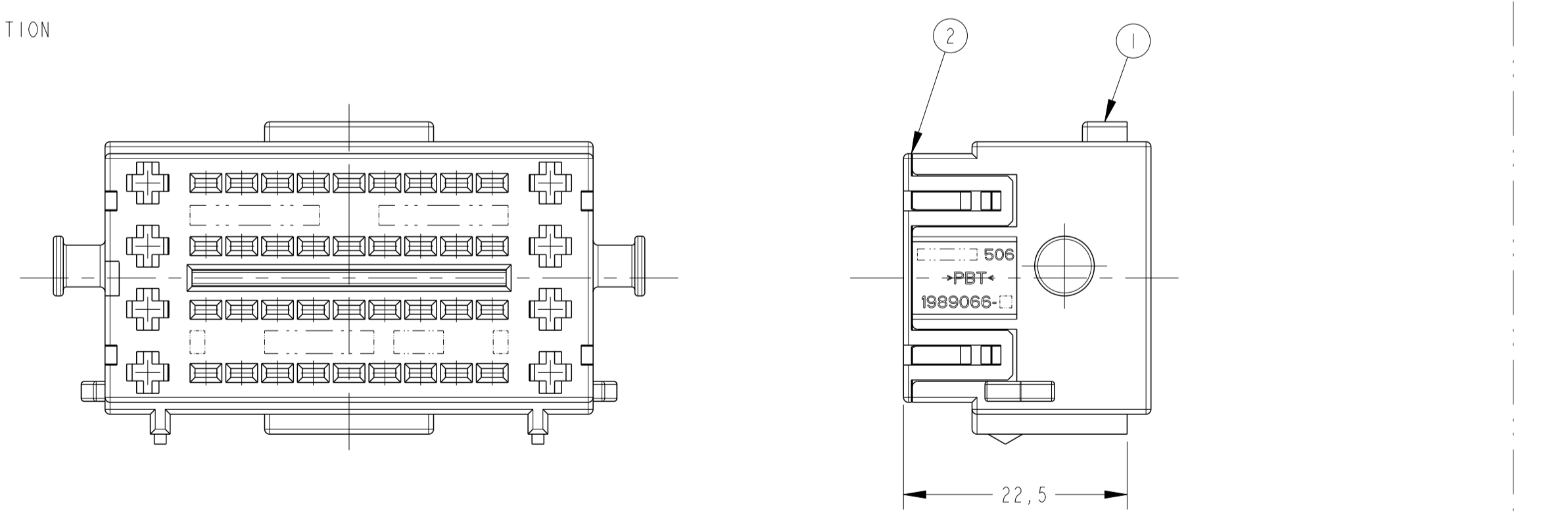
- 1- MUST BE SUPPLIED WITH T.P.A IN PRE LOCK POSITION.
- 2 - RECEPTACLE MATING CONTACTS:
1.8 - MULTI LOCK 282374-1, 282375-1, 282376-1
2.8 - JPT, SEE DRAWING C 1355047
- 3 - COUNTER PART: SEE DRAWING TE PN 1989068
- 4 - PART MUST TO COMPLY WITH GM SPECIFICATION GMW 3191 CONNECTOR TEST AND VALIDATION SPECIFICATION REV. AUGUST,2006 EXCEPT TESTS:

ITEM 4.26 - CORROSION TEST, NOT APPLICABLE FOR SAMPLES IN THE VERTICAL POSITION.

SEQ. 24A - DRY CIRCUIT RESISTANCE AFTER MECHANICAL SHOCK AND VIBRATION TEST: WHEN APPLIED LOW CORRENT <=10A FOR JPT TERMINALS, MUST TO BE USE SURFACE PRE-SILVER PLATED (Ag).
- 5- FEATURE FOR INJECTION POIN ONLY, VISIBL ON THE RIGHT OR LEFT SIDE.

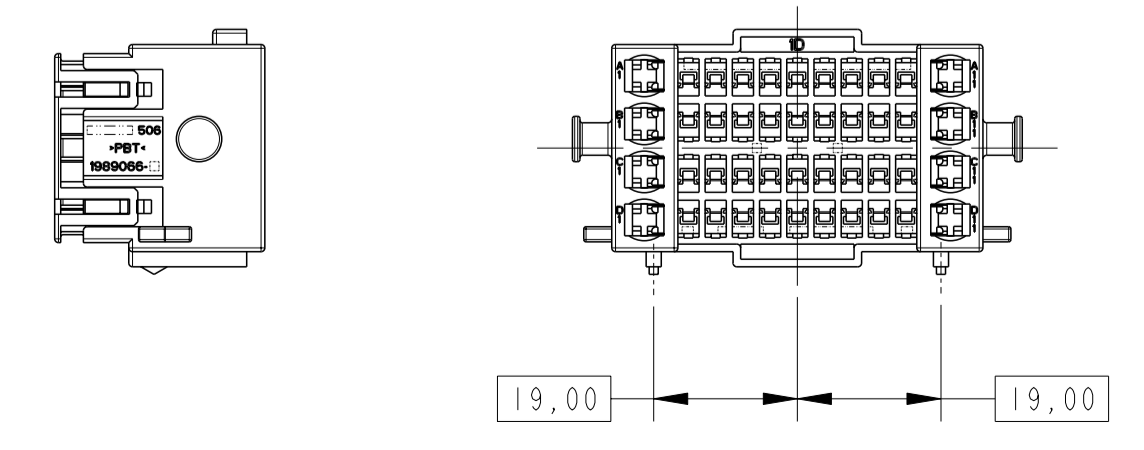


T.P.A. SPACER AT FINAL POSITION (AFTER CONTACTS INSERTION)



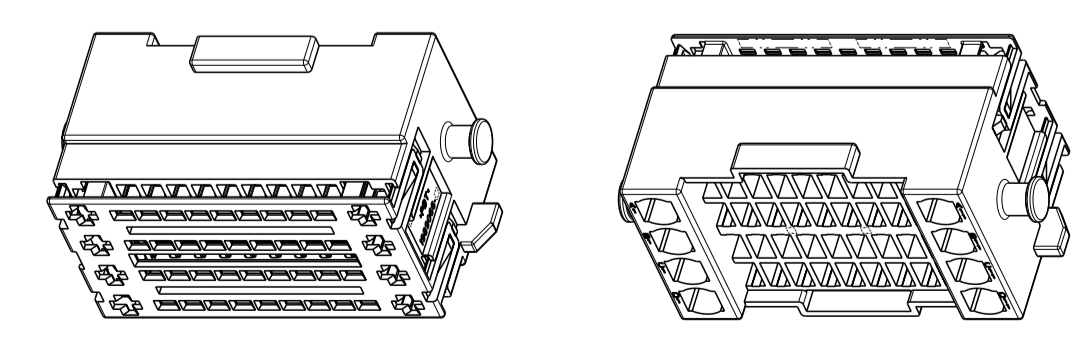
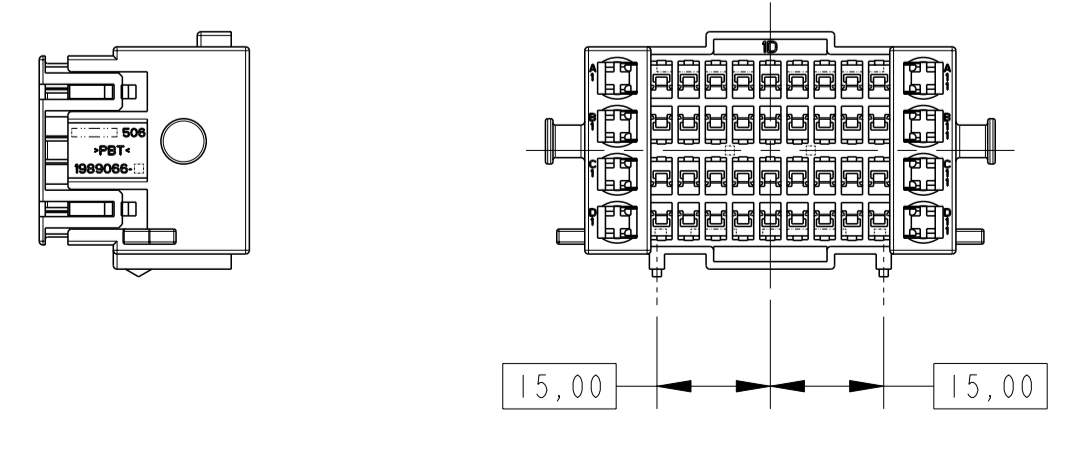
1989065-1 (BLACK HOUSING)

SCALE 1:1



1989065-2 (GRAY HOUSING)

SCALE 1:1



PERSPECTIVE VIEWS
SCALE 1:1

REQ. PER ASSY	ITEM	DESCRIPTION	MATERIAL	FINISH
1	1	T.P.A SPACER	PBT	VIOLETA / VIOLET
	1	HSG. 44 POSN. 0.70 MTL REC. + 2.8 JPT REC.	PBT	CINZA / GRAY
	1	HSG. 44 POSN. 0.70 MTL REC. + 2.8 JPT REC.	PBT	PRETO / BLACK

THIS DRAWING IS A CONTROLLED DOCUMENT.		DMN A. PERUSSI 26MAR2007
DIMENSIONS:		CHK P. L. FARIA 26MAR2007
mm	TOLERANCES UNLESS OTHERWISE SPECIFIED:	APVD C. G. MARTINS 26MAR2007
0 PLC	±	NAME
1 PLC	±0,3	HOUSING ASS'Y 44 POSN. REC.
2 PLC	±	0.70 MULTILOCK REC. + 2.8 JPT REC.
3 PLC	±	PRODUCT SPEC
4 PLC	±	108-37089
5 PLC	±	APPLICATION SPEC
ANGLES	±	411-37011
MATERIAL	FINISH	WEIGHT
SEE TABLE	SEE TABLE	-
CUSTOMER DRAWING		SCALE 2:1
		SHEET 1 OF 1
		REV. C1