

4

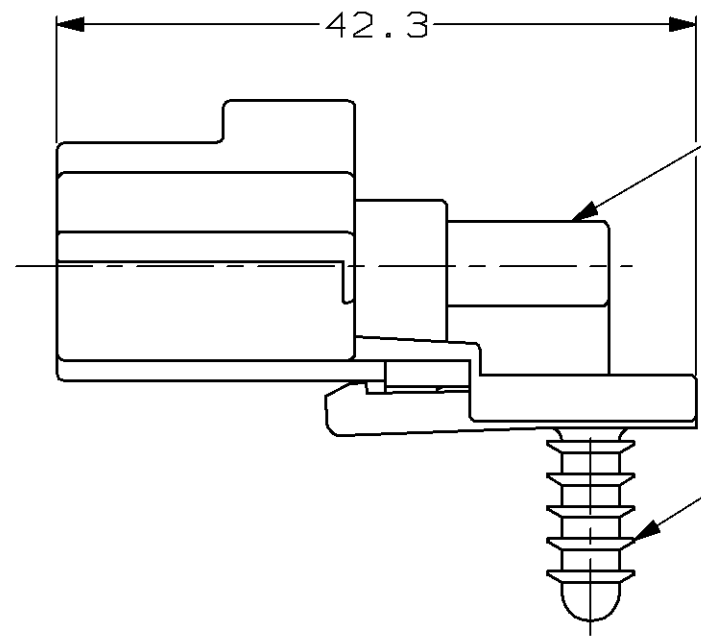
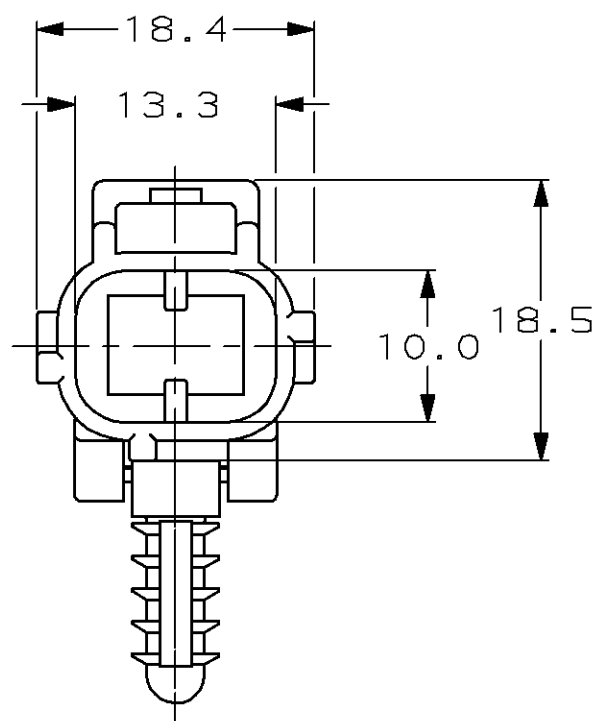
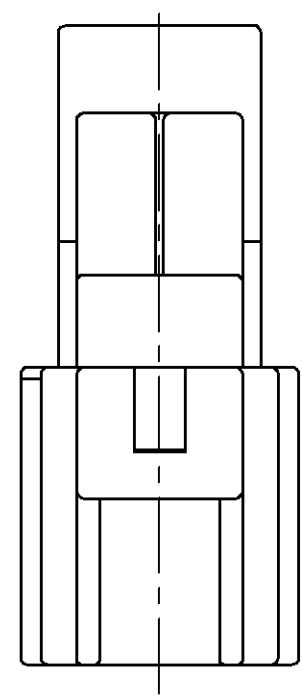
3

2

1

THIS DRAWING IS UNPUBLISHED. RELEASED FOR PUBLICATION ,19 .
© COPYRIGHT 19 BY AMP INCORPORATED. ALL RIGHTS RESERVED.

LOC	DIST	REVISIONS			
P	LTR	DESCRIPTION	DATE	DWN	APVD
G	16				
		O INITIAL RELEASE	02/14/96	KW	JK
		A REV PER ECN #0K50-0014-96	09/23/96	KW	JK
		B REV PER ECN #0K20-0024-97	09/30/97	KL	JK
		C REV PER ECN #0K20-0035-97	04NOV97	KW	JK



△ RETAINS IN A Ø5 HOLE.

2 POSN END CAP
MATL: PBT, 15% GLASS FILLED
FINISH: BLACK

RETAINER △
MATL: NYLON
FINISH: BLACK

184180-1
PART NUMBER

THIS DRAWING IS A CONTROLLED DOCUMENT FOR AMP INCORPORATED. IT IS SUBJECT TO CHANGE AND THE CONTROLLING ENGINEERING ORGANIZATION SHOULD BE CONTACTED FOR THE LATEST REVISION.		DWN K. WISE 02/14/96	AMP AMP Incorporated Harrisburg, PA 17105-3608
DIMENSIONS: mm		CHK J. KUNKLE 07/08/96	
TOLERANCES UNLESS OTHERWISE SPECIFIED:		APVD J. KUNKLE 07/08/96	NAME END CAP HSG ASSY, SSC, 2 POSN E KEY
0 PLC ±-		PRODUCT SPEC	SIZE A3
1 PLC ±0.3		APPLICATION SPEC	CAGE CODE 00779
2 PLC ±-			DRAWING NO C=184180
3 PLC ±-			SCALE 2:1
4 PLC ±-			SHEET 1 OF 1
ANGLES ±-			REV C
FINISH -		WEIGHT -	
MATERIAL -		CUSTOMER DRAWING	