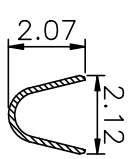
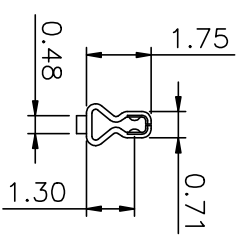
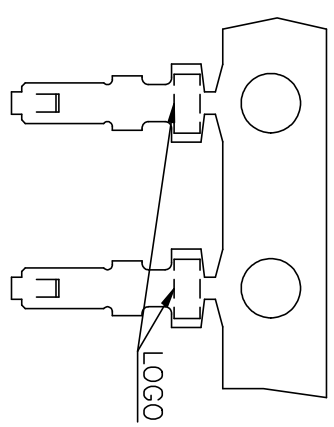
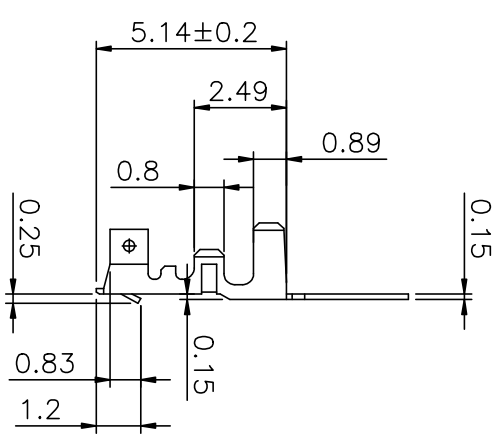
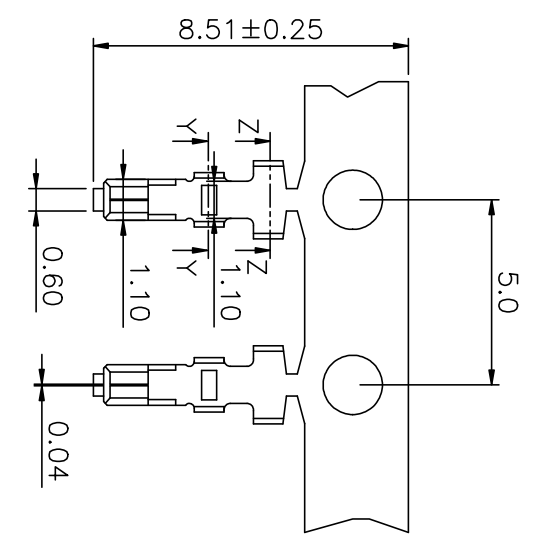
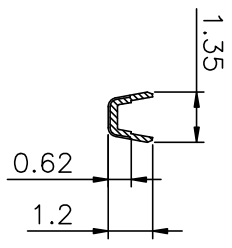


DESCRIPTION	DATE	DMN	AP'D
	11JAN24	GC	HL



SECTION Z-Z

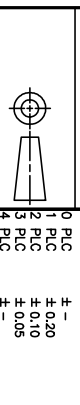


SECTION Y-Y

- NOTES:
1. MATERIALS:
TERMINAL: PHOSPHOR BRONZE, THICKNESS=0.15mm.
 2. FINISH:
TERMINAL: 100u" MIN. BRIGHT TIN PLATED OVER
50u" MIN. NICKEL UNDERPLATED ALL OVER.
 3. APPLY HOUSING PART NO: X-1775441-X.
 4. APPLICATION SPECIFICATION: 114-57018.
 5. APPLICABLE WIRE RANGE: AWG #24~#30.

THIS DRAWING IS A CONTROLLED DOCUMENT.

DIMENSIONS: MM	TOLERANCES UNLESS OTHERWISE SPECIFIED:
0 PLC	±
1 PLC	± 0.20
2 PLC	± 0.10
3 PLC	± 0.05
4 PLC	±
ANGLES	± 3°



MATERIAL SEE NOTE
 FINISH SEE NOTE

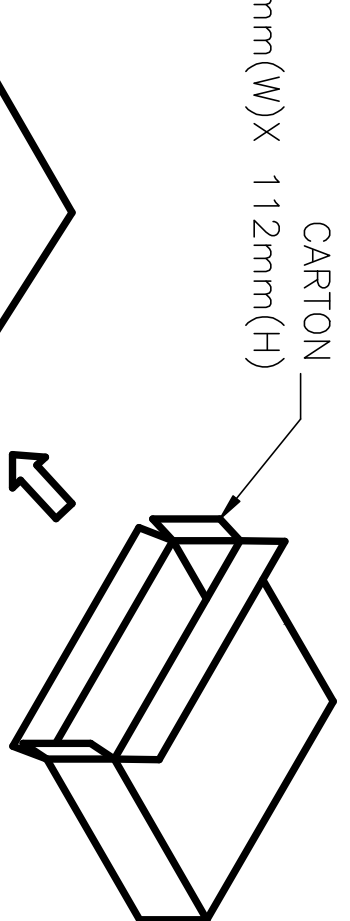
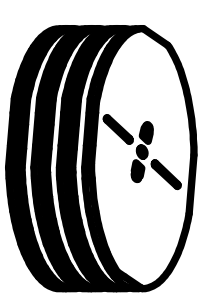
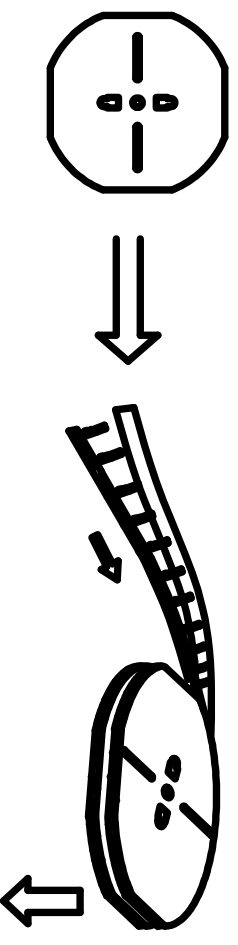
1775442-1
 PART NUMBER

Tyco Electronics
 Tyco Electronics Corporation
 Taipei, Taiwan

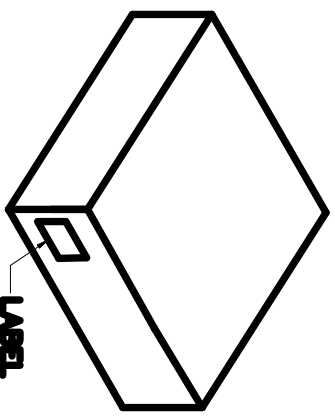
EMIX CONN., 1.5mm PITCH TERMINAL

DMN	J. LAI	24AUG2009
CHK	S. CHIEN	24AUG2009
AP'D	W. KODAMA	24AUG2009
PRODUCT SPEC	108-57631	
APPLICATION SPEC	501-57736	
WEIGHT	0.02 GRAMS	
CUSTOMER DRAWING	A3100779	
SIZE	DATE CODE	DRAWING NO
A3	1775442	1775442
SCALE	SHEET	REV
	1 of 2	A2

REVISIONS		DATE	DMN	APP'D
DESCRIPTION				
SEE SHEET 1.				



582mm(L) X 582 mm(W) X 112mm(H)



THIS DRAWING IS A CONTROLLED DOCUMENT.

DIMENSIONS:	TOLERANCES UNLESS OTHERWISE SPECIFIED:
MM	
0 P.L.C.	±
1 P.L.C.	±
2 P.L.C.	±
3 P.L.C.	±
4 P.L.C.	±
ANGLES	±



60000	15000	1775442-1
APQ (PCS/CARTON)	PPQ (PCS/REEL)	PART NUMBER

Tyco Electronics
 Tyco Electronics Corporation
 Taipei, Taiwan

EMIX CONN., 1.5mm PITCH TERMINAL

DMN	CHK	APP'D	PRODUCT SPEC	APPLICATION SPEC	WEIGHT	CUSTOMER DRAWING
SIZE	PAGE CODE	DRAWING NO	RESTRICTED TO			
A3	00779	1775442		SCALE	SHEET	REV
					2 of 2	A2