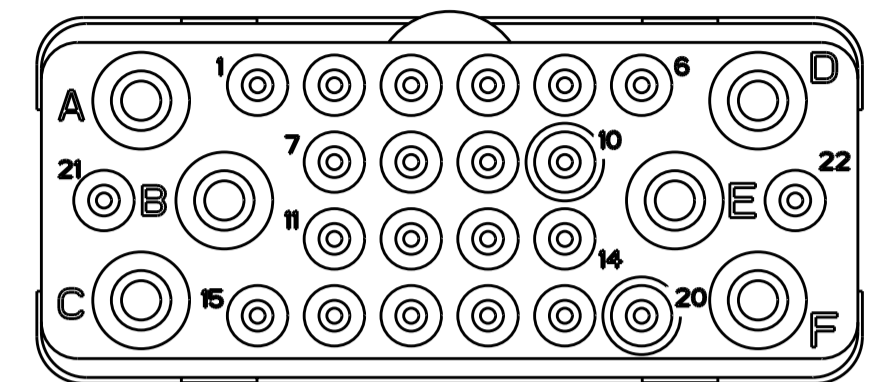
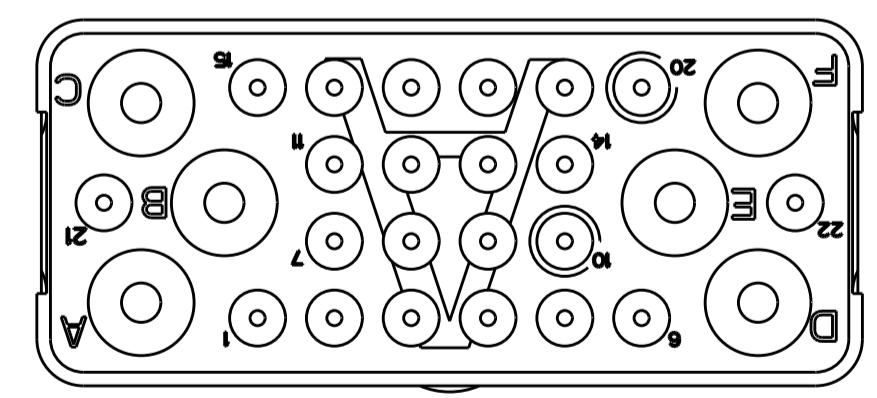
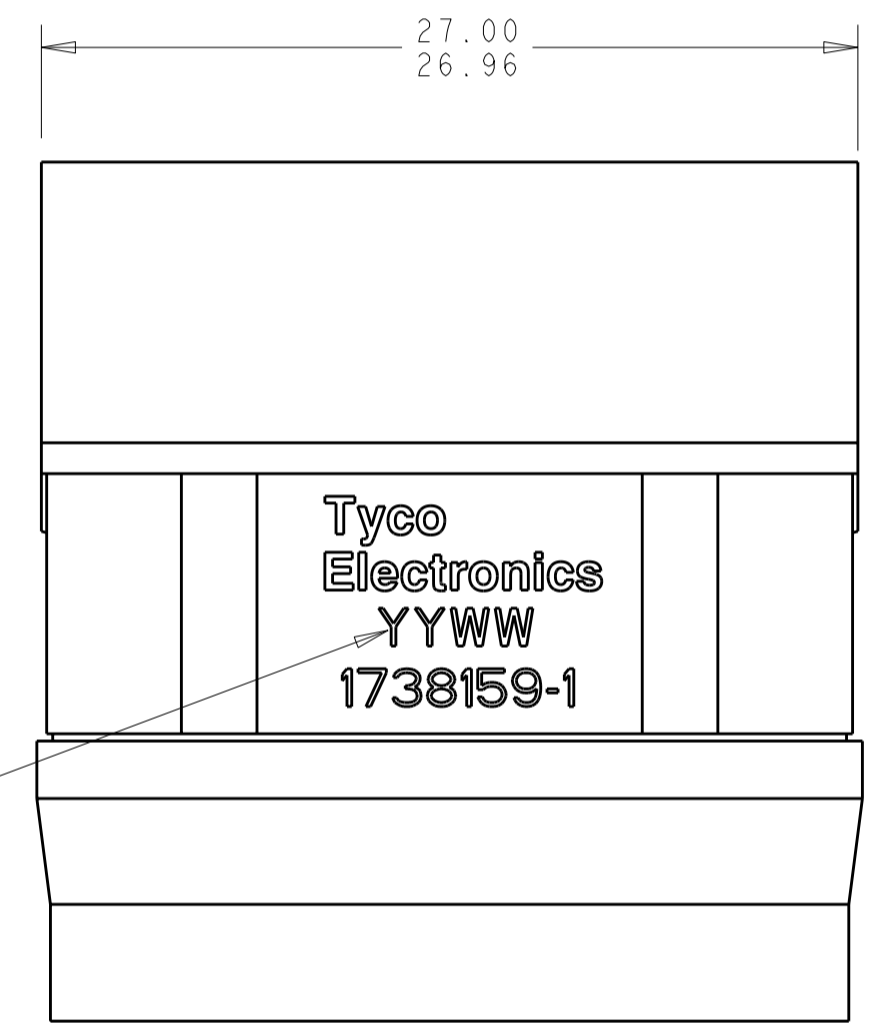
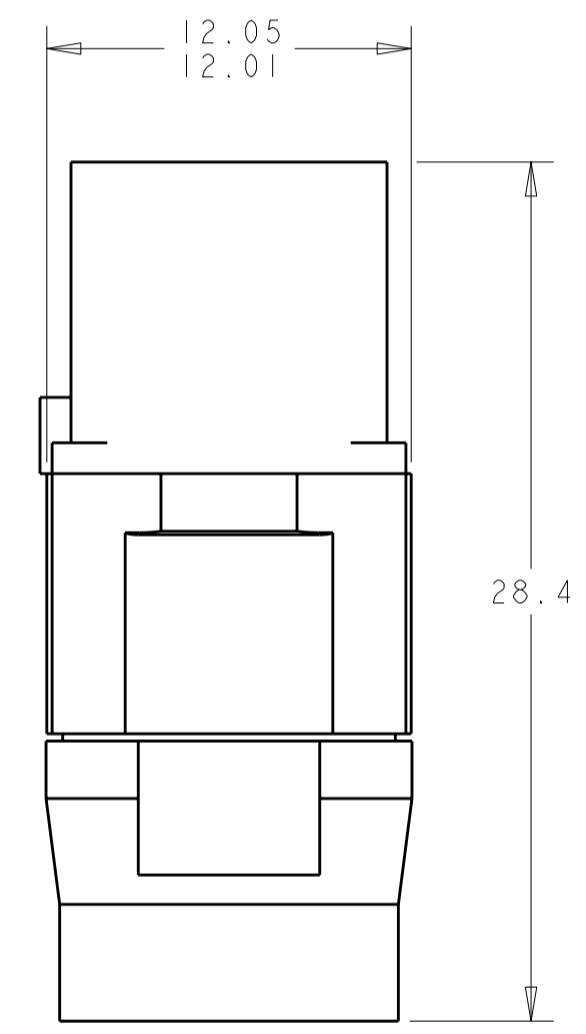


THIS DRAWING IS UNPUBLISHED. RELEASED FOR PUBLICATION 20  
 © COPYRIGHT 20 BY TYCO ELECTRONICS CORPORATION. ALL RIGHTS RESERVED.

LOC	DIST	REVISIONS			
P	LTR	DESCRIPTION	DATE	DWN	APVD
	1	REDRAWN IN PRO/E	23AUG2005	CJV	JPM
	2	REVISED	05MAY2010	RF	JM



MATING FACE



- 1 FRONT & REAR INSULATORS: THERMOSET EPOXY PER ASTM D5948  
 CONTACT RETENTION CLIPS: COPPER ALLOY PER ASTM B194.  
 REAR GROMMET & INTERFACIAL SEAL: FLOUROSILICONE ELASTOMER  
 PER MIL-R25988 B, EXCEPT 4.6.6.1
- 2 DATE CODE: YEAR & WEEK (YY WW).
- 3 DESCRIPTIVE PART NUMBER: GPRBE28SA  
 THIS INSERT CONTAINS:  
 22 CAVITIES FOR SIZE 22 SOCKET CONTACTS  
 6 CAVITIES FOR SIZE 15 OR 16 SOCKET CONTACTS.
- 4 THIS PRODUCT IS SOLD BY TYCO ELECTRONICS  
 UNDER A LICENSE FROM RADIAL SA.

1738159-1  
 PART NUMBER

<small>THIS DRAWING IS A CONTROLLED DOCUMENT FOR TYCO ELECTRONICS CORPORATION          IT IS SUBJECT TO CHANGE AND THE CONTROLLING ENGINEERING ORGANIZATION          SHOULD BE CONTACTED FOR THE LATEST REVISION.</small>		DWN 23AUG2005 CHK 23AUG2005 APVD 23AUG2005	Tyco Electronics Harrisburg, PA 17105-3608
DIMENSIONS: mm	TOLERANCES UNLESS OTHERWISE SPECIFIED: 0 PLC ± 1 PLC ±0.5 2 PLC ±0.13 3 PLC ±0.013 4 PLC ±0.0001 ANGLES ± FINISH	PRODUCT SPEC APPLICATION SPEC WEIGHT	NAME GPR-B SOCKET INSERT CLASS E CONTACT ARRANGEMENT 28, KEY A
MATERIAL 1	CUSTOMER DRAWING	SCALE 4:1	SIZE A2 CAGE CODE 00779 DRAWING NO. 1738159 RESTRICTED TO - SHEET 1 OF 1 REV 2