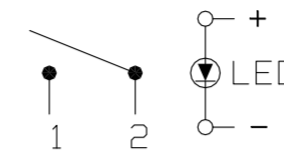
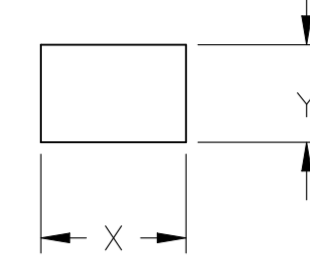


| P | LTR | DESCRIPTION | DATE | DWN | APVD |
|---|-----|---------------------------|-----------|-----|------|
| J | | REVISED PER ECO-20-013571 | 17FEB2021 | SR | JB |

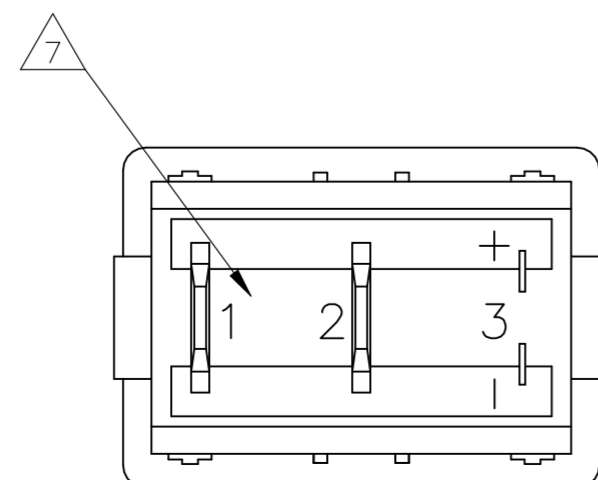
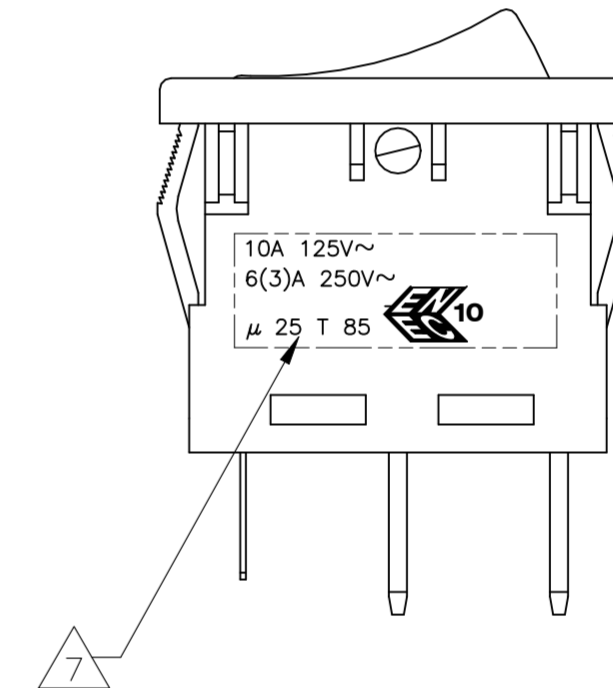
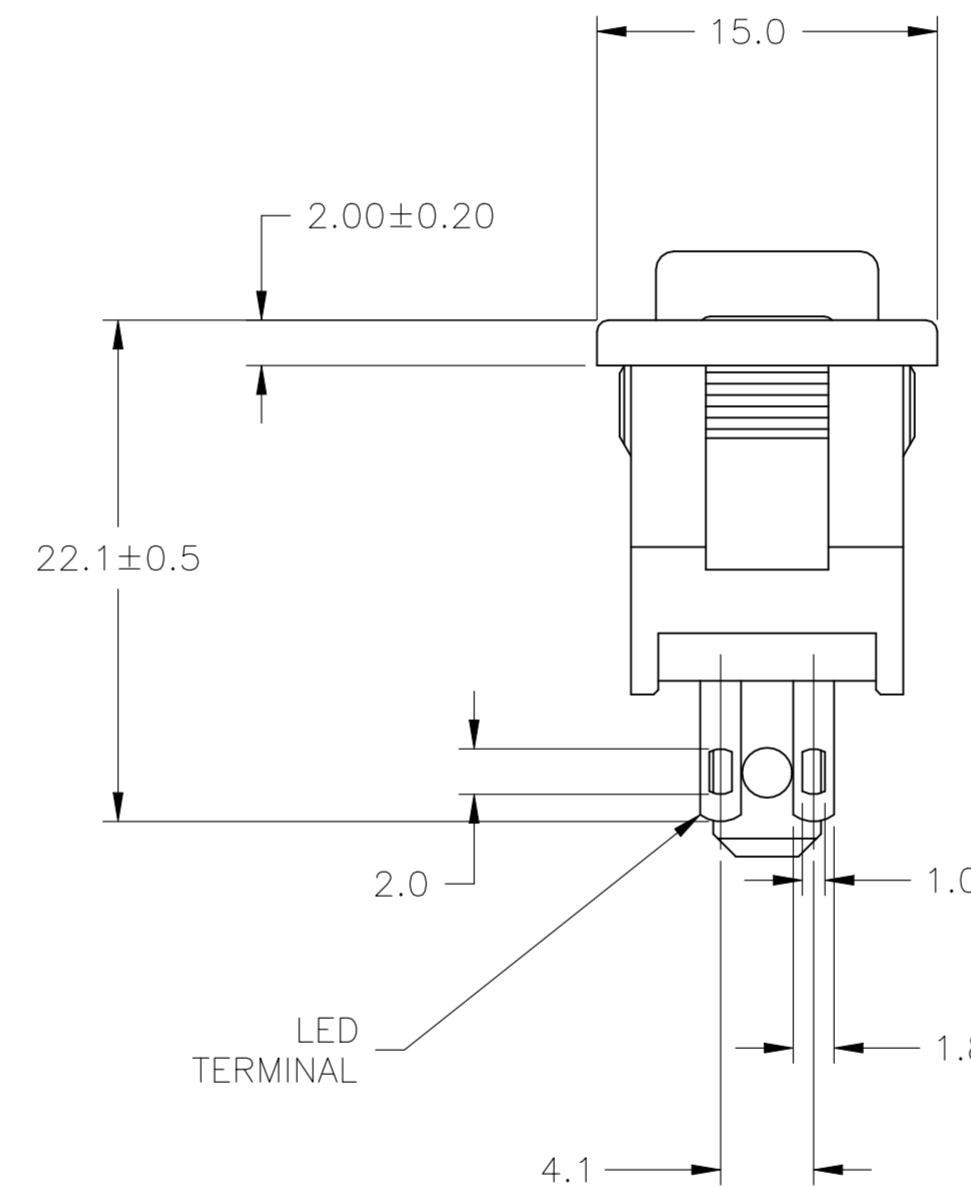
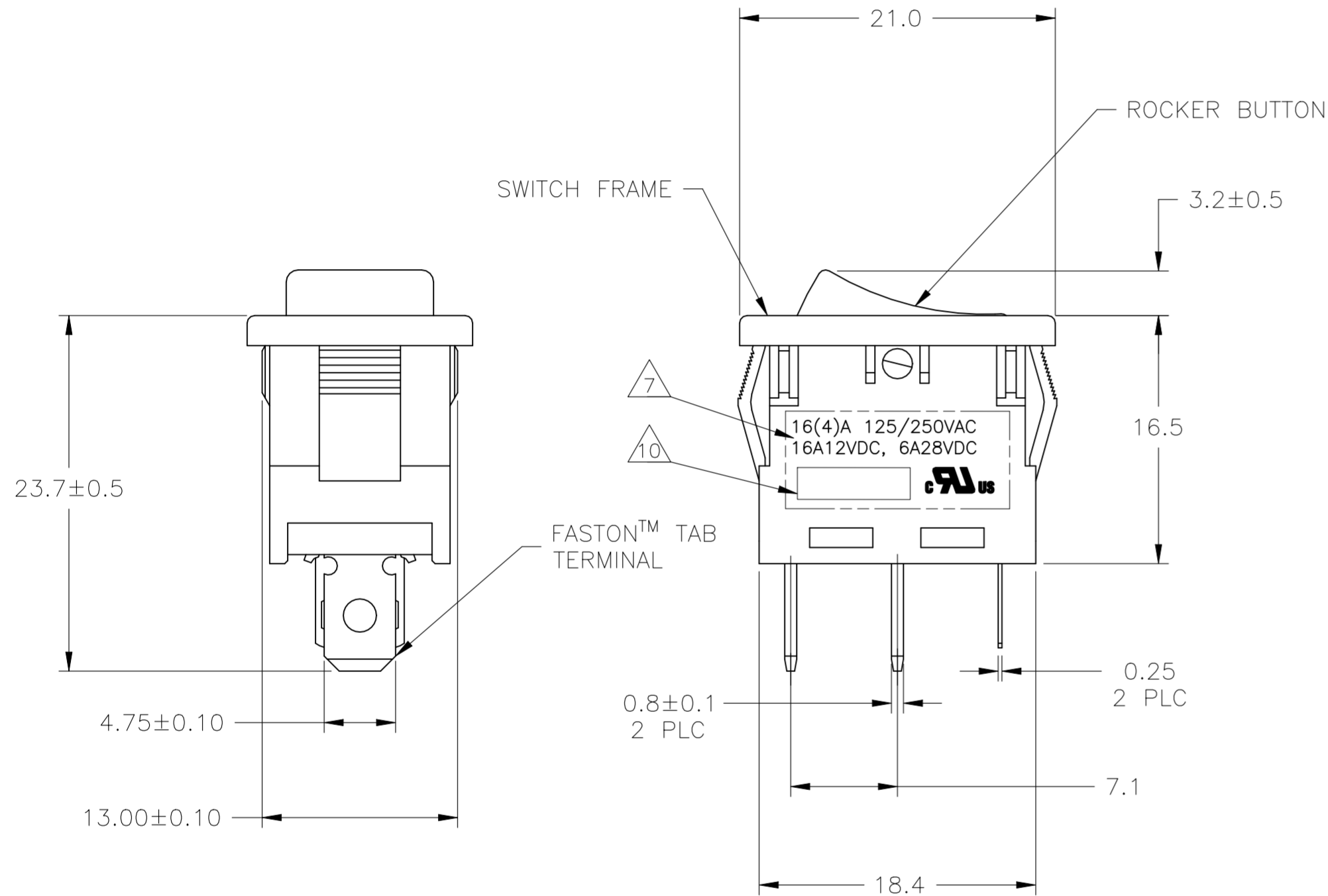
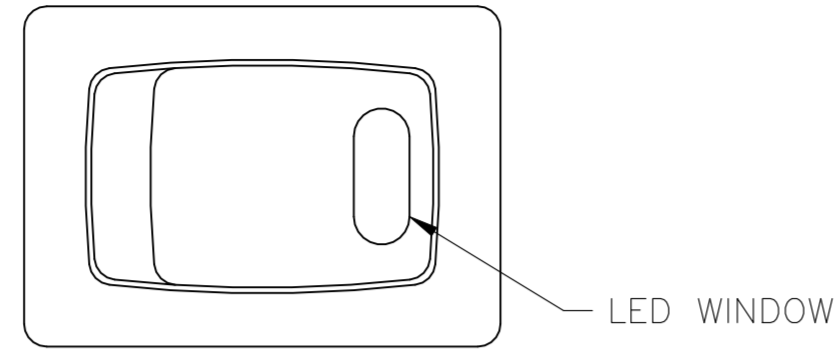
SWITCH FUNCTION C1
CIRCUIT DIAGRAM



PANEL CUT OUT



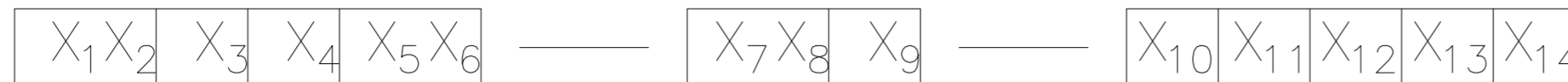
| | | |
|-----------------|----------|----------|
| 2.00-3.00 | 19.8-0.1 | 13.0+0.1 |
| 1.25-2.00 | 19.4-0.1 | 13.0+0.1 |
| 0.75-1.25 | 19.2-0.1 | 13.0+0.1 |
| PANEL THICKNESS | X | Y |



| | | | | |
|--|--|------------------------------------|--------------------------------|-------------------------|
| THIS DRAWING IS A CONTROLLED DOCUMENT. | | DWN M.BINNER 25FEB2002 | TE Connectivity Ltd. | |
| DIMENSIONS: MM | | CHK J.MOSIER | | |
| TOLERANCES UNLESS OTHERWISE SPECIFIED: | | APVD - | PRODUCT SPEC NOT APPLICABLE | SIZE A2 |
| 0 PLC ± - | | APPLICATION SPEC NOT APPLICABLE | CAGE CODE 00779 | DRAWING NO C=1571083 |
| 1 PLC ± 0.30 | | WEIGHT | RESTRICTED TO | |
| 2 PLC ± 0.05 | | MATERIAL 1 | SCALE 3:1 | SHEET 1 of 2 |
| 3 PLC ± - | | FINISH 2 | REV J | |
| 4 PLC ± - | | CUSTOMER DRAWING | | |
| ANGLES ± - | | | | |

| REVISIONS | | | | |
|-----------|-----|-------------|------|------|
| P | LTR | DESCRIPTION | DATE | APVD |
| - | - | SEE SHEET 1 | - | - |

ALCOSWITCH PART NUMBER



SWITCH TYPE: X₁X₂ = PR - POWER ROCKER

NOMINAL PANEL CUT OUT SIZE: X₃ = A - 13.0x19.2

NUMBER OF POLES: X₄ = S - SINGLE

SWITCH FUNCTION: X₅X₆ = C1 - ON-OFF, OPAQUE, LED ILLUMINATED WINDOW, ROCKER BUTTON

CURRENT RATING: X₇X₈ = 16 - △6

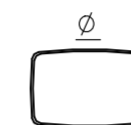
TERMINAL TYPE: X₉ = E - FASTON™ TAB
L - SOLDER LUG

FRAME COLOR: X₁₀ = B - BLACK
W - WHITE

ROCKER COLOR: X₁₁ = B - BLACK
G - GREEN
R - RED
W - WHITE

LED COLOR: X₁₂ = A - AMBER
G - GREEN
R - RED

LEGEND TEXT PATTERN: X₁₃ =



LEGEND TEXT COLOR: X₁₄ = ∅ - NOT APPLICABLE



MATERIALS:

ROCKER BUTTON & HOUSING: NYLON 66, UL 94 V-2.
LED WINDOW: POLYCARBONATE, UL 94 V-2
TERMINAL, ACTIVE CONTACTOR: COPPER ALLOY PER ASTM B152/B152M
LED TERMINALS, PLUNGER: COPPER ALLOY PER ASTM B036
SPRING: STEEL WIRE PER ASTM A228/A228M
CONTACT: SILVER-TIN OXIDE



FINISH:

TERMINAL, ACTIVE CONTACTOR: 1.0µm MIN SILVER
PLUNGER: 3.0µm MIN NICKEL
LED TERMINALS: 3.0µm MIN TIN

3.

ELECTRICAL SPECIFICATIONS:

CURRENT AND VOLTAGE: △6
CONTACT RESISTANCE (INITIAL): <100mΩ (5V, 1A DC)
DIELECTRIC STRENGTH (INITIAL): >1000 VAC, 1 MINUTE
INSULATION RESISTANCE (INITIAL): >100MΩ MIN (500VDC BETWEEN OPEN CONTACTS)
INRUSH CURRENT: 50A / 3msec (CAPACITIVE LOAD)
ELECTRICAL LIFE ENDURANCE: >6000 OPERATIONS, VOLTAGE DROP: <100mV
TEMPERATURE RISE AT TERMINALS: <30°C, 6000 OPERATIONS
(AMBIENT CONDITIONS: 25±2°C AND 65±5%R.H)
LED - RED: FORWARD VOLTAGE 2.0 VDC AT 20mA FORWARD CURRENT
GREEN: FORWARD VOLTAGE 2.2 VDC AT 20mA FORWARD CURRENT
AMBER: FORWARD VOLTAGE 2.1 VDC AT 20mA FORWARD CURRENT

4.

MECHANICAL SPECIFICATIONS:

ACTUATING FORCE: 150g MIN, 650g MAX
OPERATING LIFE ENDURANCE: >100,000 OPERATIONS
TERMINAL RETENTION STRENGTH: >2.5kg- SOLDER LUG
>6.8kg- FASTON TAB

5.

ENVIRONMENTAL SPECIFICATIONS:

AMBIENT TEMPERATURE: -20°C TO +85°C
HUMIDITY: MAX 85%
SALT SPRAY: NO REMAKABLE RUST IN METAL PARTS. (5%SALT / 35°C 24HRS)
SHOCK: NO MECHANICAL DEFECT OR DAMAGE. (100g / 10MSEC/ X,Y,Z 3 TIMES)
VIBRATION: NO MECHANICAL DEFECT OR DAMAGE. (10-55Hz /1.5mm/ X,Y,Z 2HRS)



UL: 16(4)A 125/250VDC 16A12VDC, 6A28VDC
ENEC: 10A 125V~, 6(3)A 250V~, µ25T85



ELECTRICAL RATINGS, APPROVED AGENCY LOGOS, TERMINAL IDENTIFICATION NUMBERS, LED POLARITY SYMBOLS, MOLDED APPROXIMATELY AS SHOWN ON THE SIDE AND BOTTOM SURFACES OF THE SWITCH HOUSING.

8.

COMPONENT RECOGNIZED TO US AND CANADIAN STANDARDS, UL FILE NO. E46765.

9.

NOTE REMOVED.



TE CONNECTIVITY LOGO LOCATED APPROXIMATELY AS SHOWN

| | |
|------------------------|------------------|
| PRASC1-16F-BBR00 | 1571083-2 |
| ALCOSWITCH PART NUMBER | TYCO PART NUMBER |

| | | | | | |
|--|--------|------------------|-----------|---|-----------|
| THIS DRAWING IS A CONTROLLED DOCUMENT. | | DWN | 25FEB2002 | M.BINNER | |
| DIMENSIONS: MM | | CHK | - | J.MOSIER | |
| TOLERANCES UNLESS OTHERWISE SPECIFIED: | | APVD | - | NAME | |
| 0 PLC | ± - | PRODUCT SPEC | - | PWR ROCKER SW, 13.0mm X 19.2mm, SPST, LED | |
| 1 PLC | ± 0.30 | APPLICATION SPEC | - | SIZE | CAGE CODE |
| 2 PLC | ± 0.05 | NOT APPLICABLE | - | A2 | 00779 |
| 3 PLC | ± - | NOT APPLICABLE | - | DRAWING NO | C=1571083 |
| 4 PLC | ± - | NOT APPLICABLE | - | RESTRICTED TO | - |
| ANGLES | ± - | WEIGHT | - | SCALE | 3:1 |
| MATERIAL | FINISH | CUSTOMER DRAWING | - | SHEET | 2 of 2 |
| | | REV | J | | |