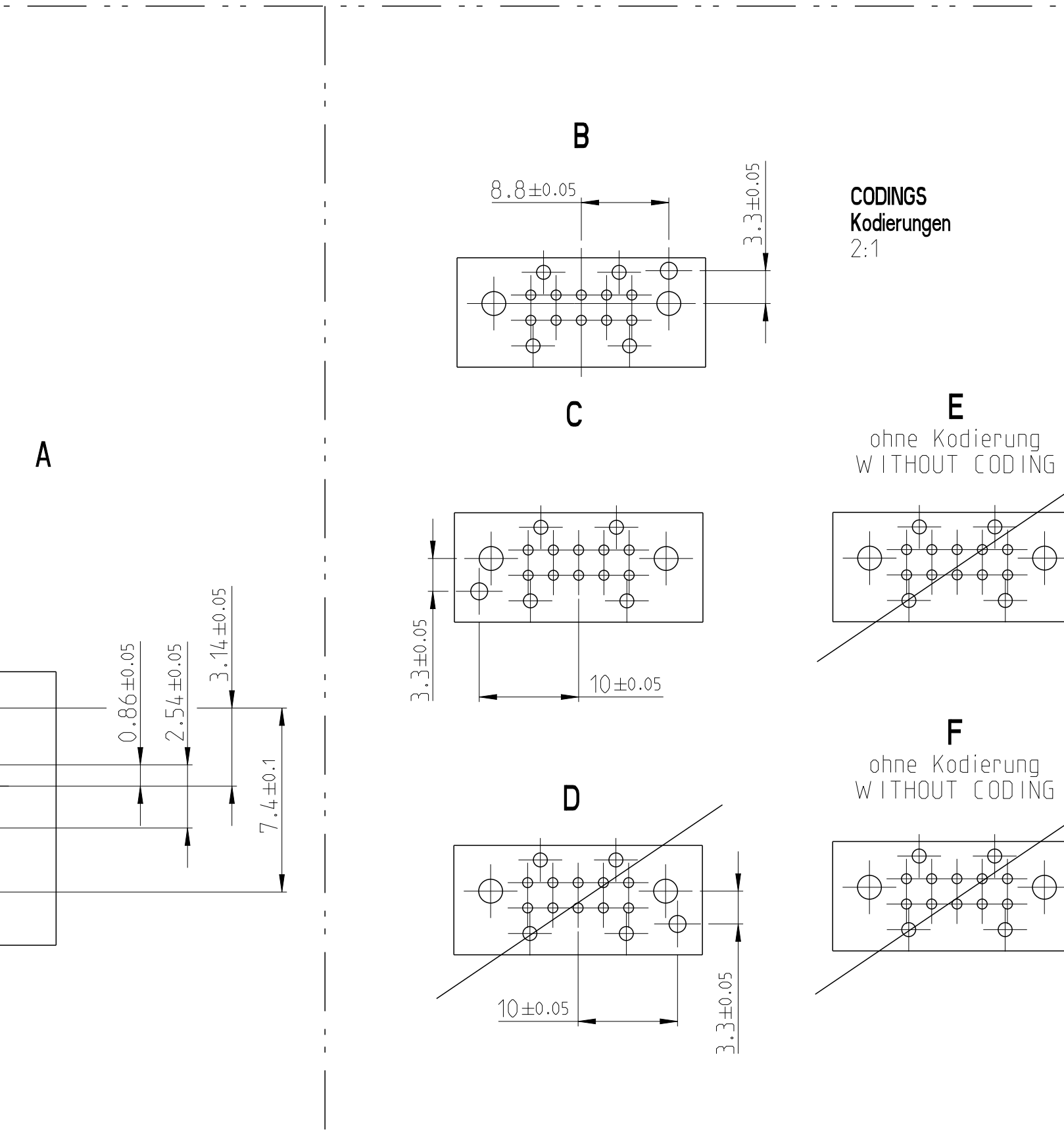
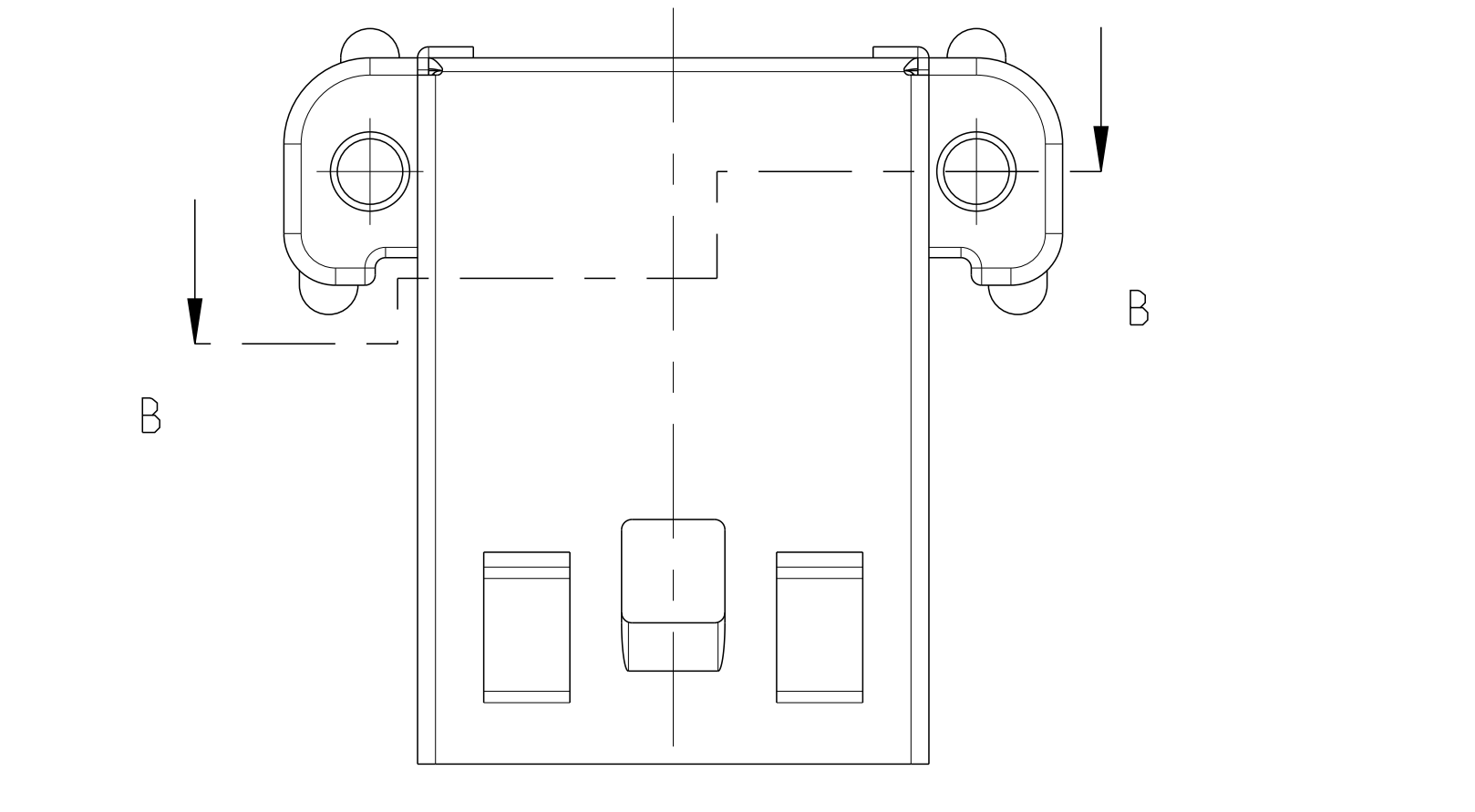
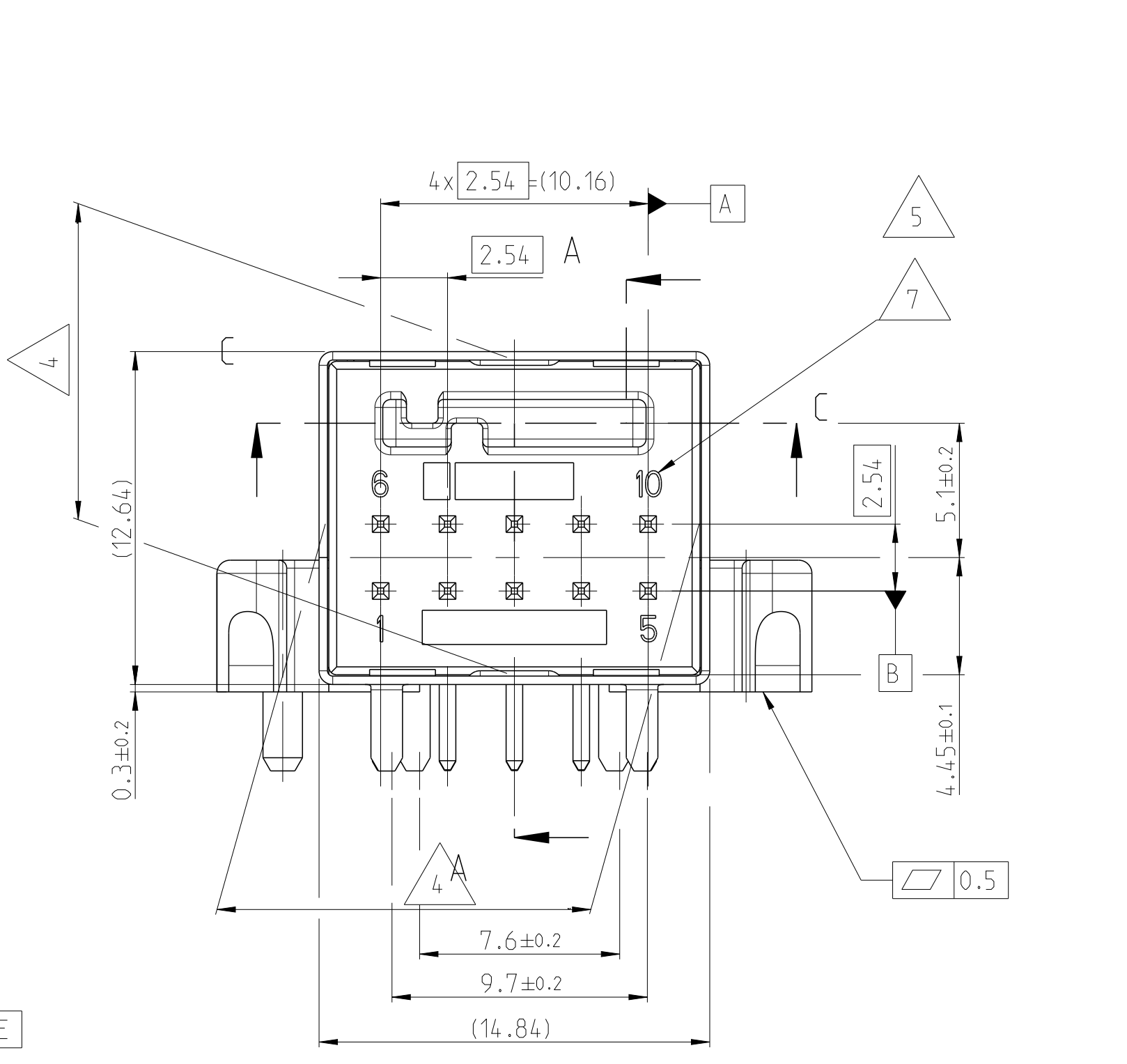
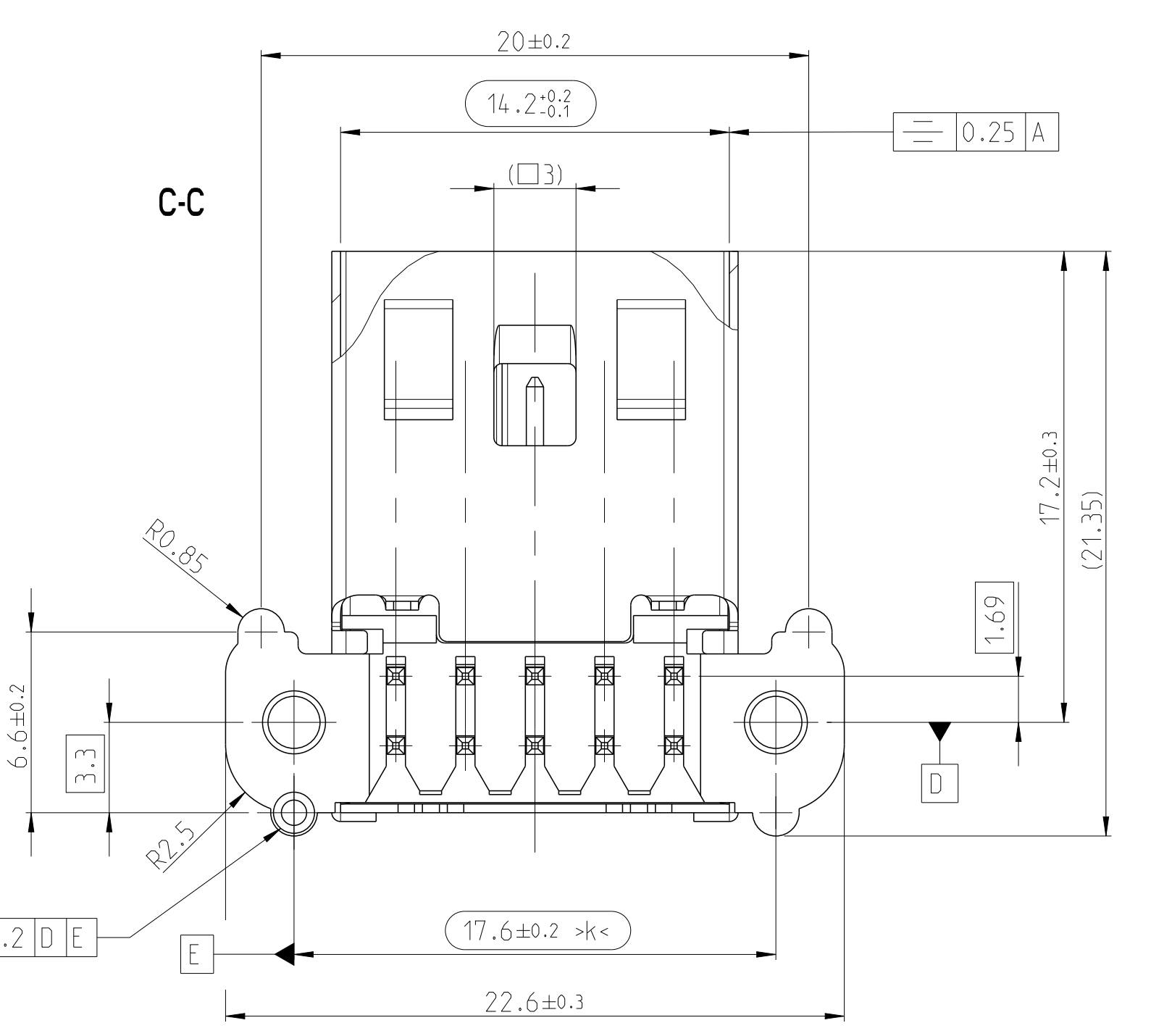
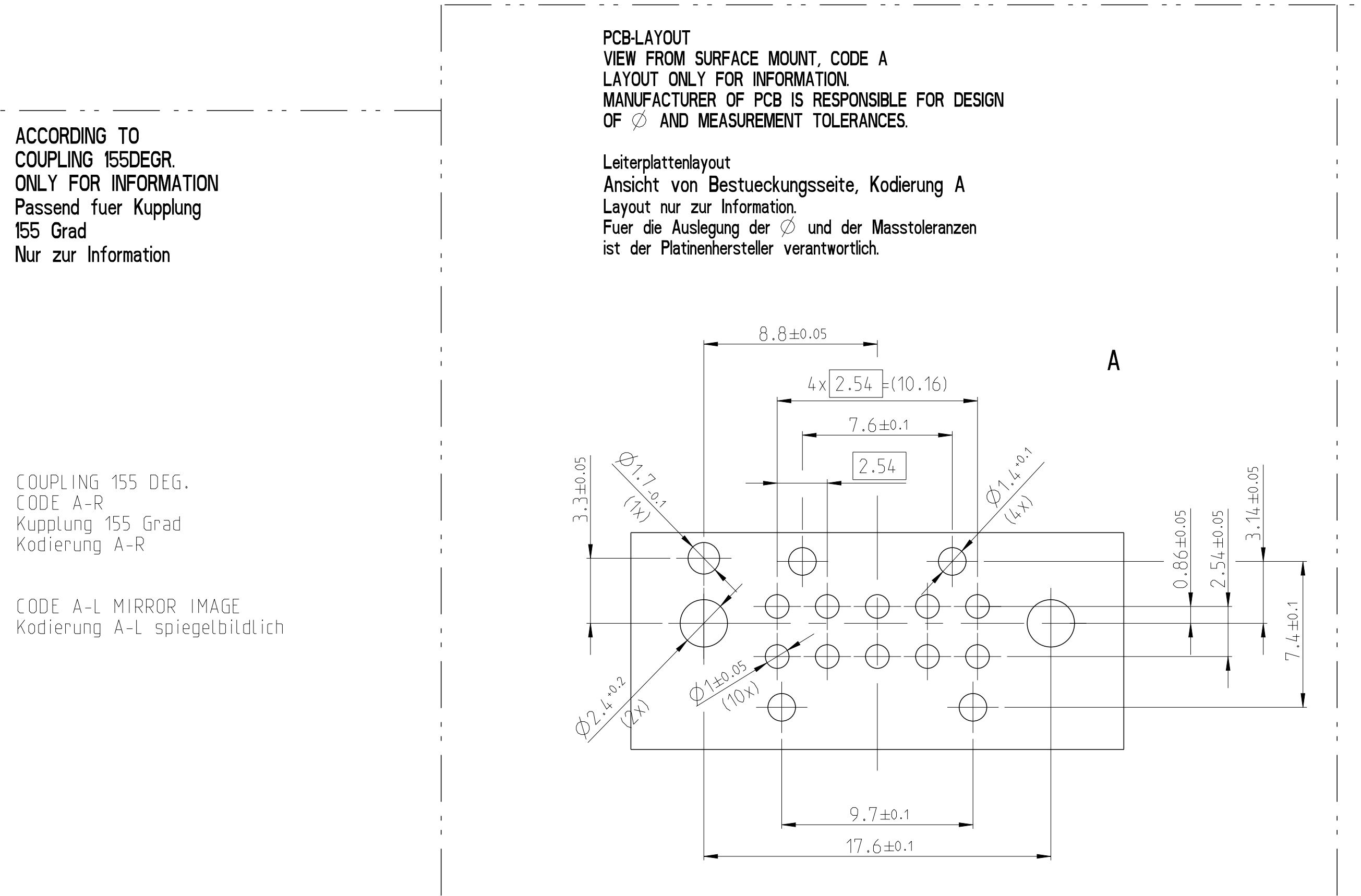
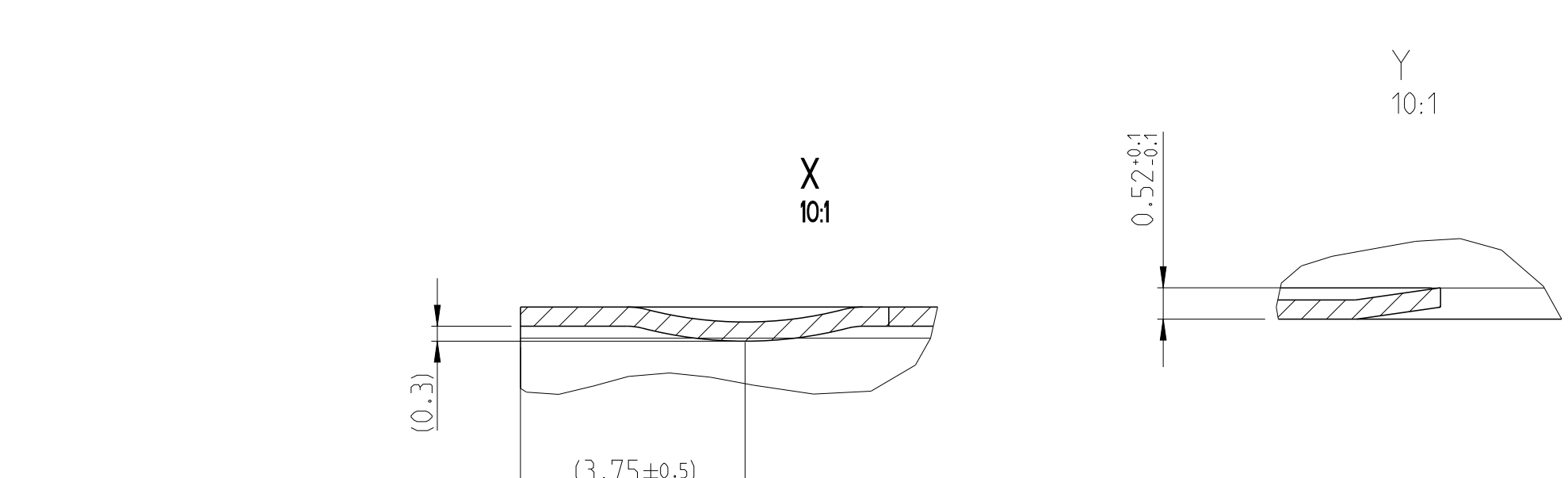
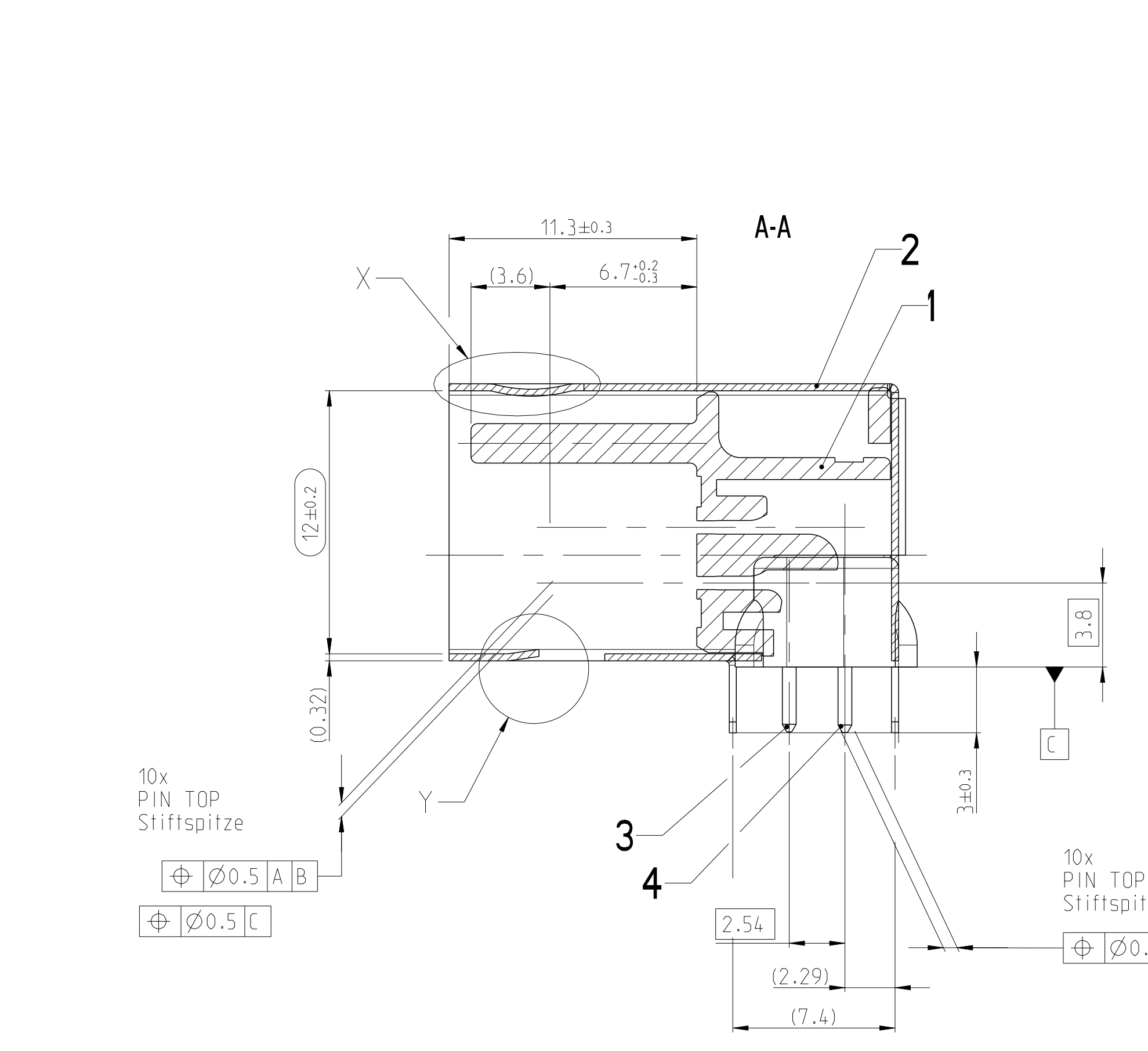
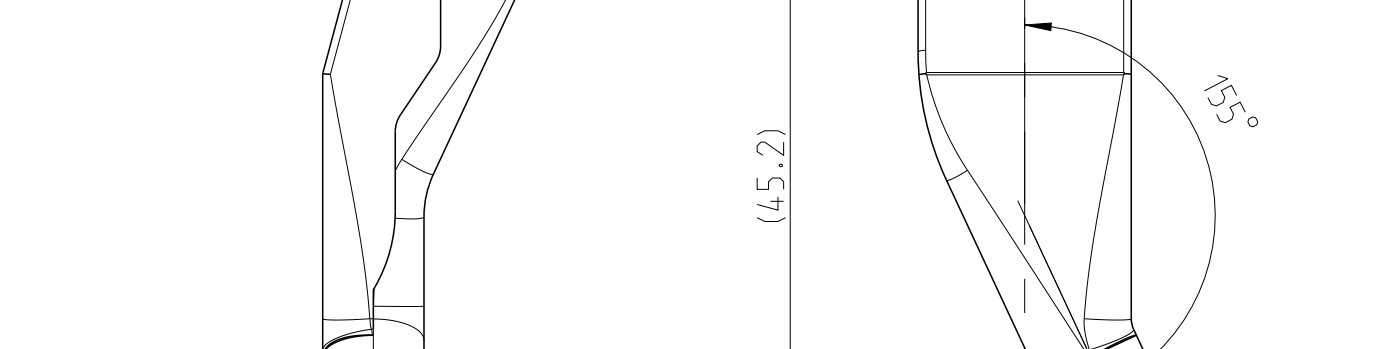
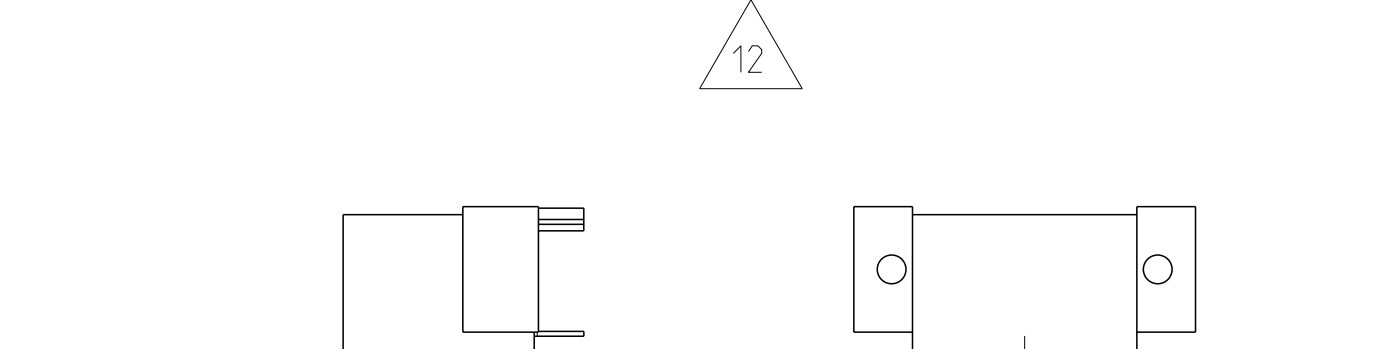
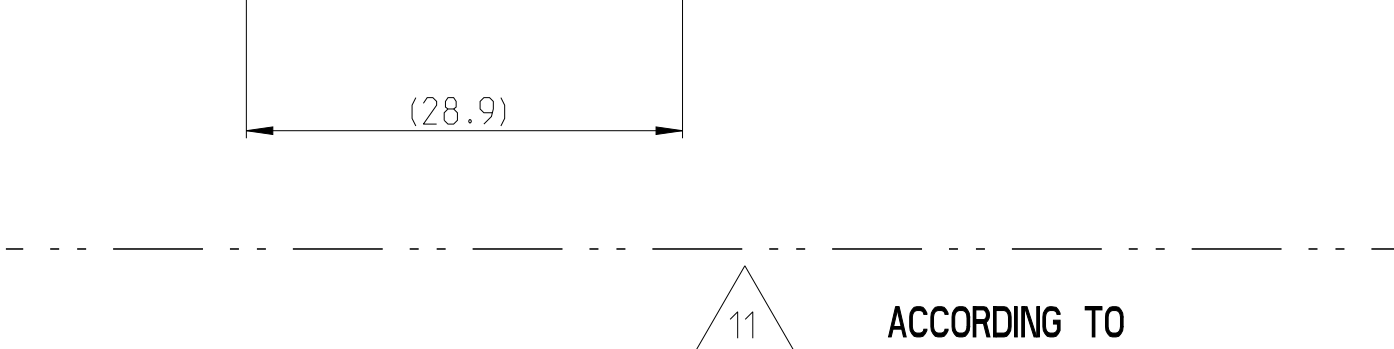
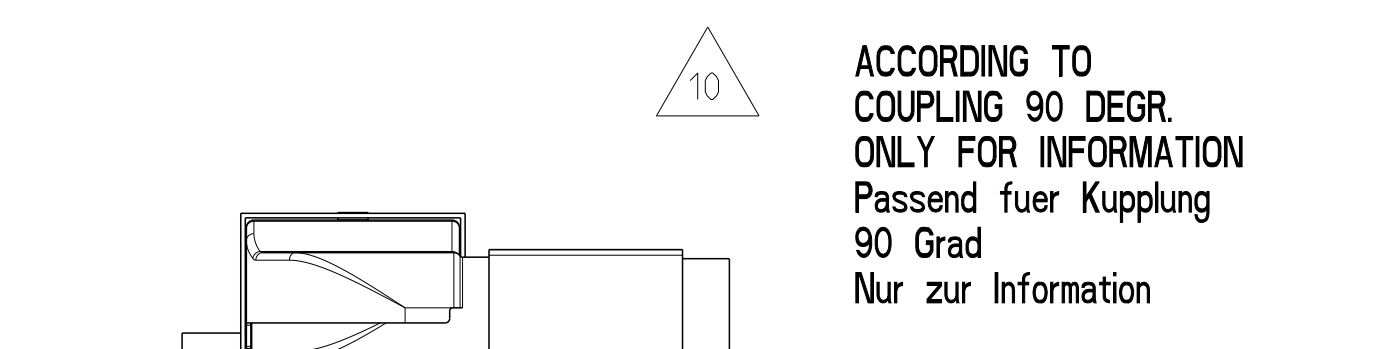
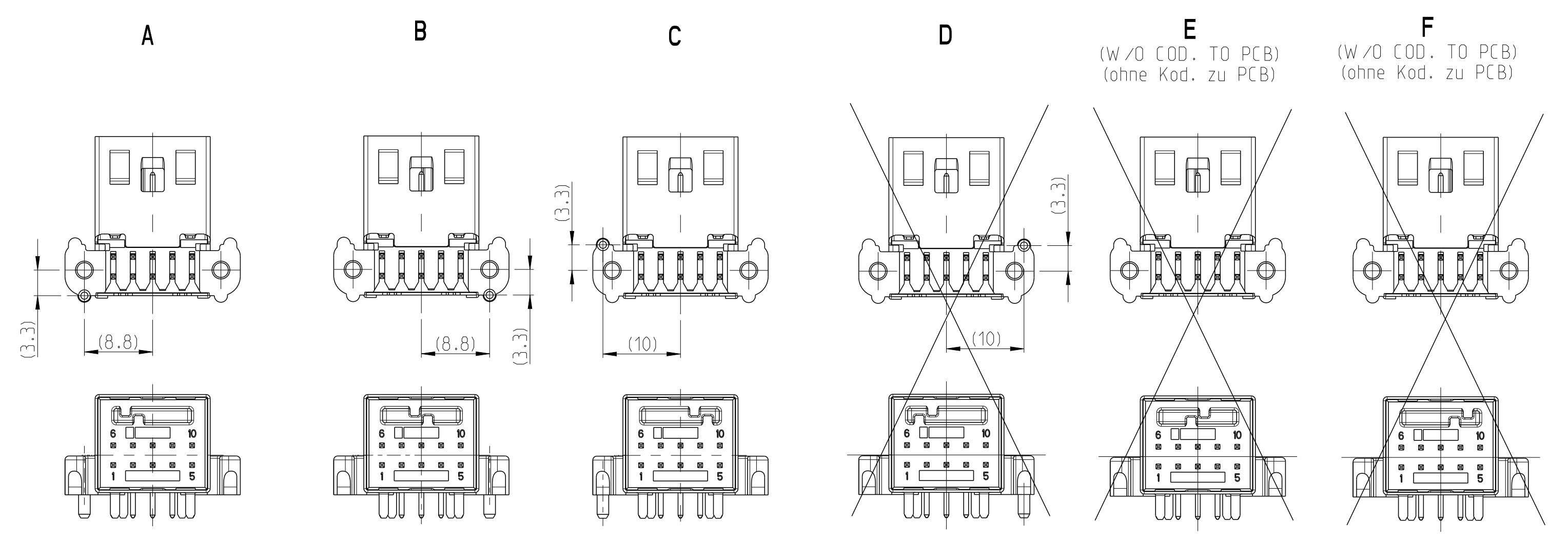
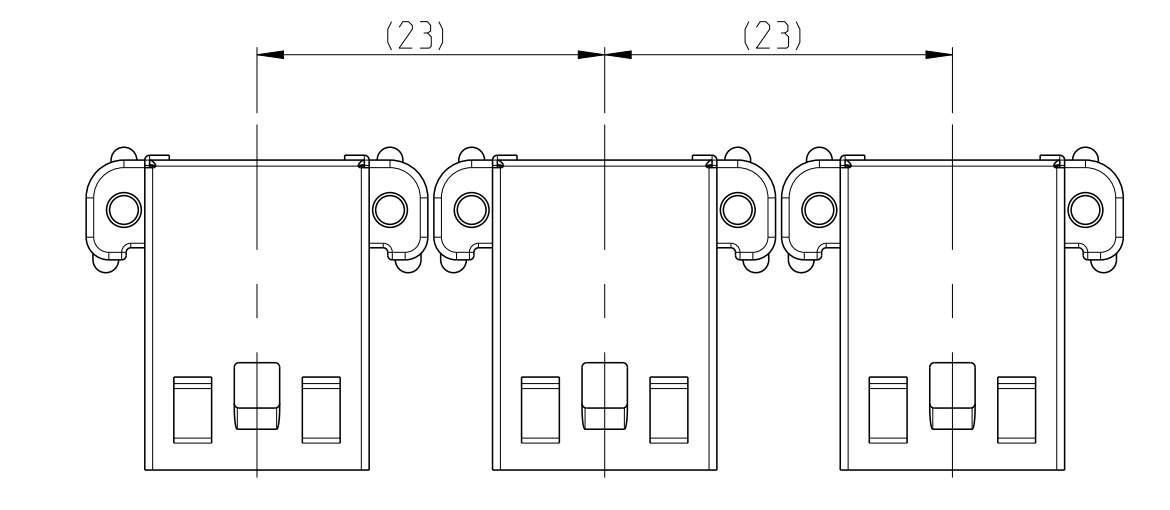


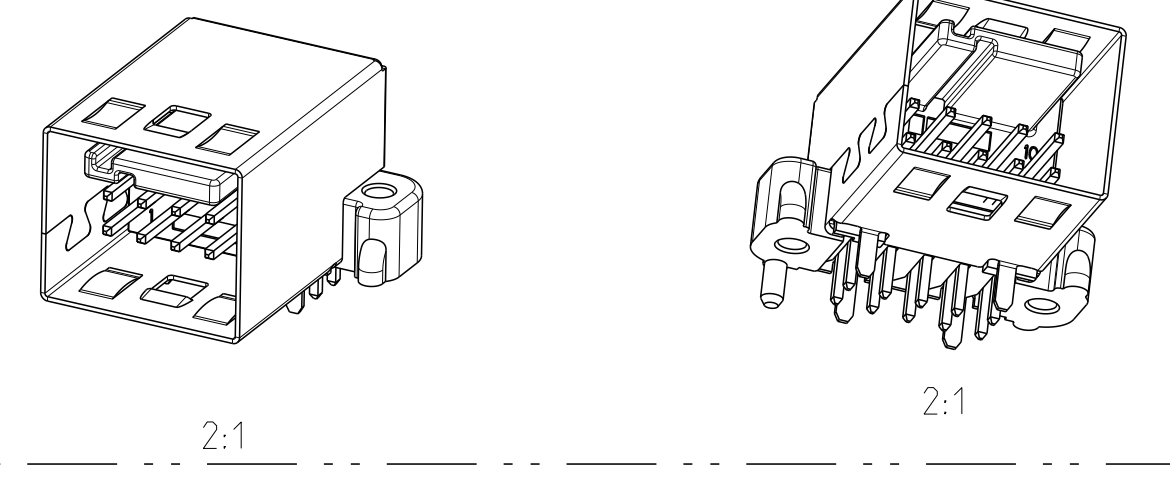
**CODINGS
 Kodierungen**
 2:1



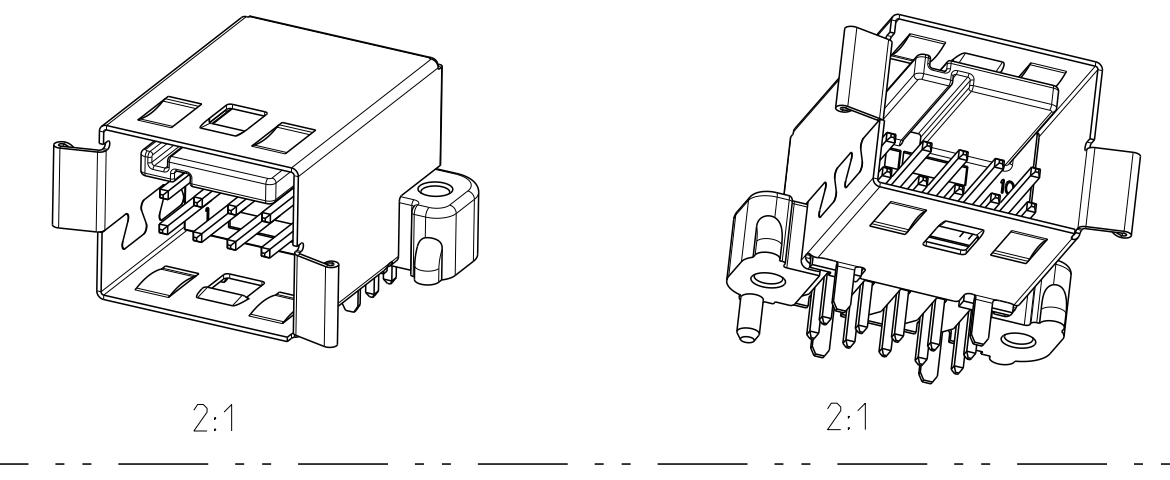
**ASSEMBLY PITCH
 Einbau-Raster**
 2:1



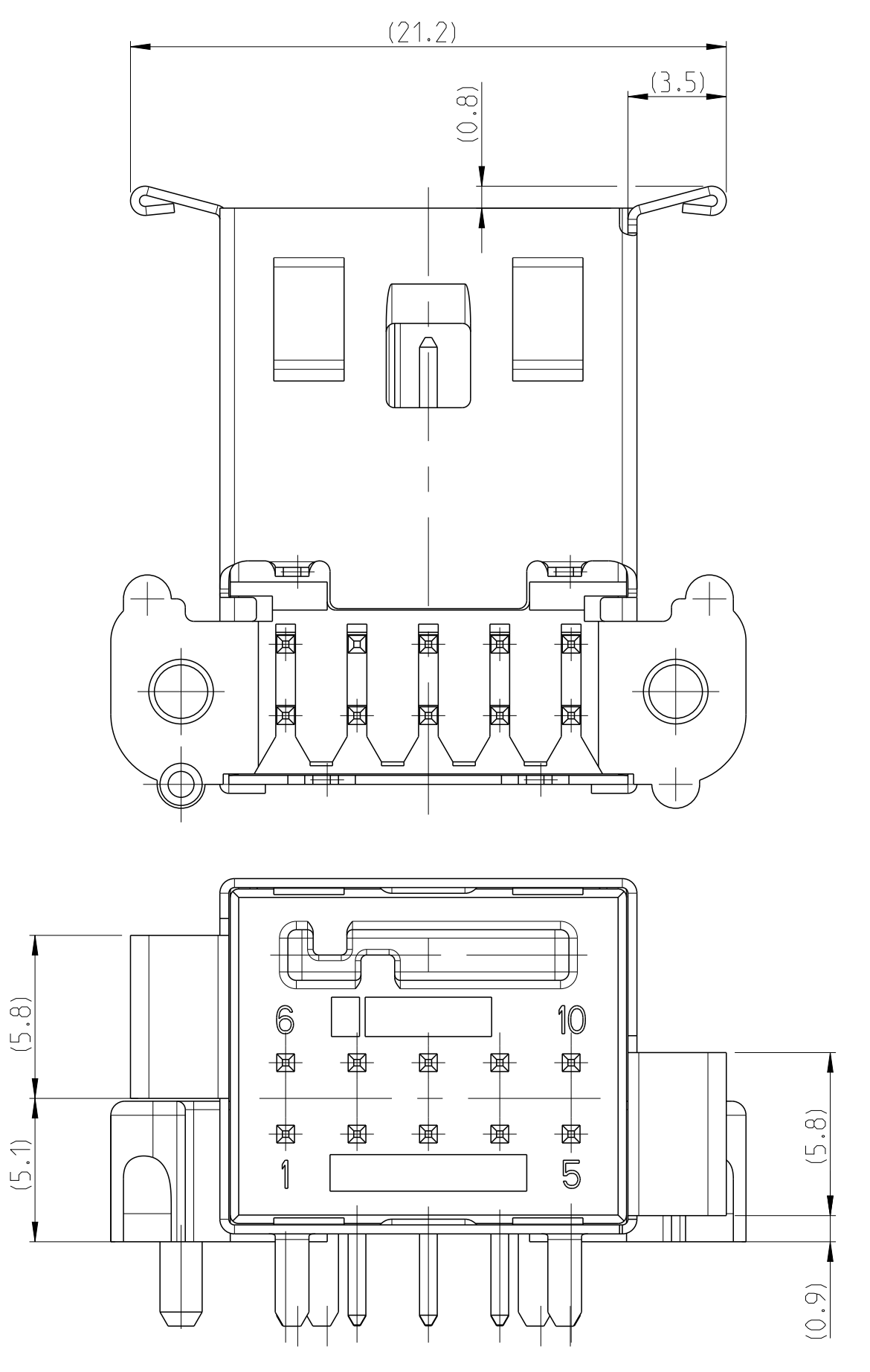
**VERSION 1
 Variante 1**



**VERSION 2
 Variante 2**



**VERSION 2
 Variante 2**



NOTE	FEATURE	EGAUT02116-950
⚠	MATED WITH COUPLING 90°	EGAUT02116-950
⚠	MATED WITH COUPLING 120°	EGAUT02116-910
⚠	MATED WITH COUPLING 155°	EGATN04246-910

CODING 1- -3 AS SHOWN
 Kodierung 1- -3 wie gezeichnet

**NOTES
 Bemerkungen**

- ONLY THE GERMAN LANGUAGE VERSION AUTHORITY
 Maßgebend ist der deutsche Text
- FUNCTIONAL MEASUREMENTS MARKED WITH ARE DOCUMENTED IN THE EMPB. NOT MARKED MEASUREMENTS ARE MEASURED BUT NOT DOCUMENTED IN THE EMPB. DEVIATIONS HAVE TO BE CORRECTED. Funktionsbestimmende Maße, die mit gekennzeichnet sind, werden im EMPB dokumentiert. Nicht gekennzeichnete Maße werden ebenfalls ausgemessen, aber nicht im EMPB dokumentiert. Abweichungen sind zu korrigieren.
- MEASUREMENTS MARKED WITH «K» HAVE TO BE USED FOR MACHINE CAPABILITY STUDIES IN THE EMPB. Maße, die mit «K» gekennzeichnet sind, werden fuer Maschinenfähigkeitsnachweise im Rahmen des EMPB verwendet
- WARPAGE PERMITTED MAX. +/-0.3MM
 Verzug zulässig max. +/-0.3mm
- SUPPLIER-MARK
 Lieferanten-Kennzeichnung
- DATE CODE
 Herstellungskennung
- CAVITY MARKING
 Kammernummern
- NOT SPECIFIED DIMENSIONS SEE SPECIFICATION: 114-18654
 Fehlende Maße siehe Ausfuhrungsvorschrift:
- REFERENCE SREW FOR CONNECTION WITH PCB: EJOT PT K22 TORX
 Referenzschraube zur Verbindung mit PCB: EJOT PT K22 Torx
 TORQUE TORX-SCREW:
 Anzugsmoment Torx-Schraube: 30±5 Ncm
- PACKAGING: PLASTIC TRAY INTO SHIPPING BOX
 Verpackung: Produkttraeger im Versandkarton
- PACKAGING: PLASTIC TRAY INTO SHIPPING BOX WITH PE-BAG, DESSICANTS AND INDICATOR CARD
 Verpackung: Produkttraeger im Versandkarton ausgeschlagen mit PE-Beutel, Trockenmittel und Indikatorkarte

VERSION 2 WITH EMI-SHEET METAL Variante 2 mit EMV-Lamellen		MADE FROM 2-1418656-4	
TB PIN HEADER SHIELDED (90°, 10pos.)	0.0055 F 6-1418656-4	5	PIN COPPER ALLOY Tinned 4
TB PIN HEADER SHIELDED (90°, 10pos.)	0.0055 E 5-1418656-4	5	PIN COPPER ALLOY Tinned 4
TB PIN HEADER SHIELDED (90°, 10pos.)	0.0055 D 4-1418656-4	5	PIN COPPER ALLOY Tinned 4
TB PIN HEADER SHIELDED (90°, 10pos.)	0.0055 C 3-1418656-4	5	PIN COPPER ALLOY Tinned 4
TB PIN HEADER SHIELDED (90°, 10pos.)	0.0055 B 2-1418656-6	5	PIN COPPER ALLOY Tinned 4
TB PIN HEADER SHIELDED (90°, 10pos.)	0.0055 B 2-1418656-4	5	PIN COPPER ALLOY Tinned 4
TB PIN HEADER SHIELDED (90°, 10pos.)	0.0055 A 1-1418656-4	5	PIN COPPER ALLOY Tinned 4
TB PIN HEADER SHIELDED (90°, 10pos.)	0.0053 F 6-1418656-3	5	PIN COPPER ALLOY Tinned 4
TB PIN HEADER SHIELDED (90°, 10pos.)	0.0053 E 5-1418656-3	5	PIN COPPER ALLOY Tinned 4
TB PIN HEADER SHIELDED (90°, 10pos.)	0.0053 D 4-1418656-3	5	PIN COPPER ALLOY Tinned 4
TB PIN HEADER SHIELDED (90°, 10pos.)	0.0053 C 3-1418656-3	5	PIN COPPER ALLOY Tinned 4
TB PIN HEADER SHIELDED (90°, 10pos.)	0.0053 B 2-1418656-5	5	PIN COPPER ALLOY Tinned 4
TB PIN HEADER SHIELDED (90°, 10pos.)	0.0053 B 2-1418656-3	5	PIN COPPER ALLOY Tinned 4
TB PIN HEADER SHIELDED (90°, 10pos.)	0.0053 A 1-1418656-3	5	PIN COPPER ALLOY Tinned 4

DIMENSIONS		DATE		DRAWING NO.		SCALE	
DATE	02AUG2005	DATE	02AUG2005	DRAWING NO.	1418656	SCALE	1:1
DESIGNER	J. Waller	APPROVED	J. Waller	VERSION	1	SHEET	1 OF 1
PRODUCT SPEC	108-18659	PROJECT SPEC	108-18659	DESCRIPTION	PIN HEADER, 10POS., SHIELDED, MOS	DATE	11.08.2025
APPLICATOR SPEC		APPLICATOR SPEC		DESCRIPTION	Stiftwanne, 10polig, geschlmt, MOS	DATE	11.08.2025
FINISH		FINISH		DESCRIPTION	90 DEGREE / 90 Grad - Version	DATE	11.08.2025