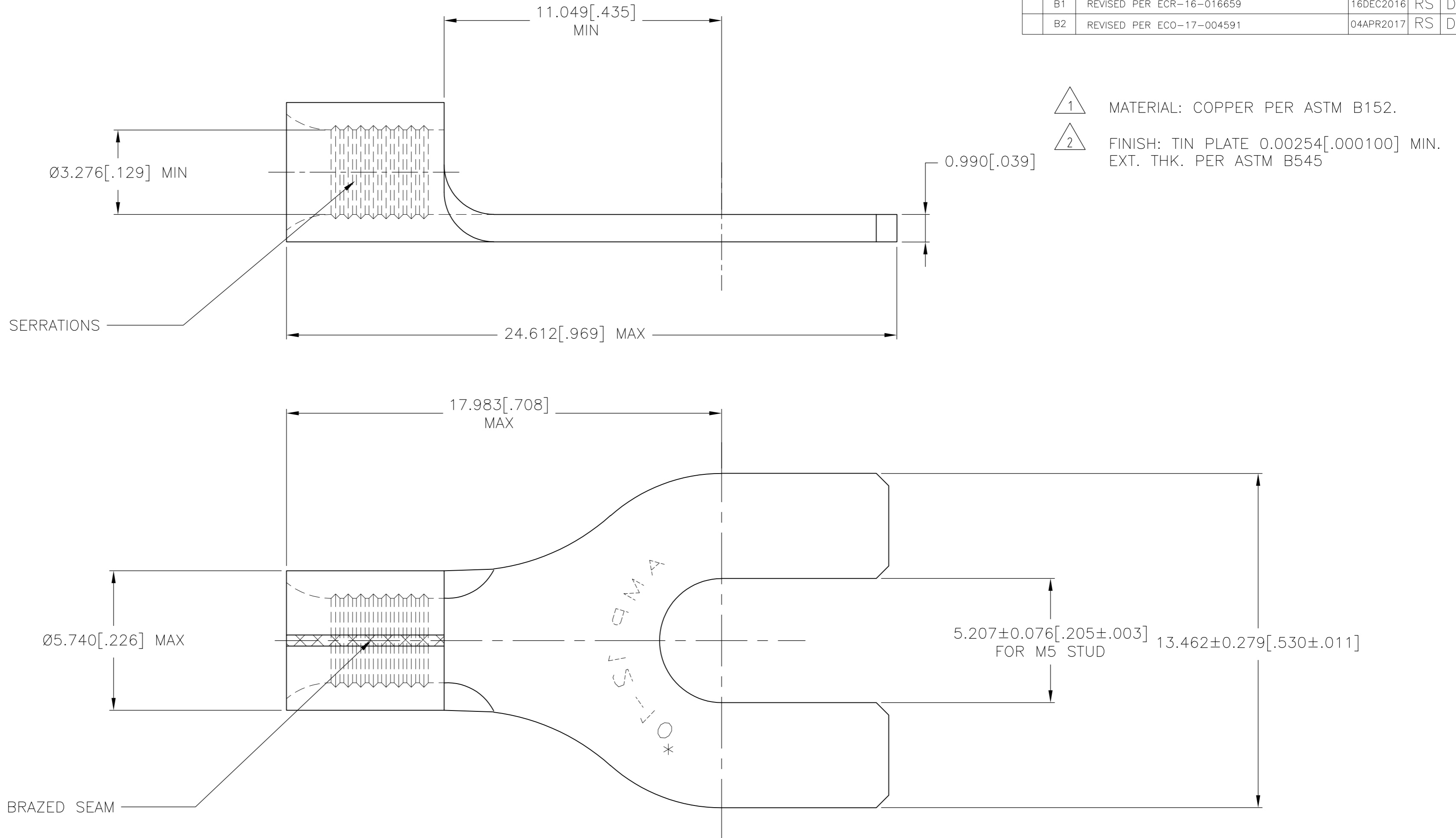


THIS DRAWING IS UNPUBLISHED. RELEASED FOR PUBLICATION
 © COPYRIGHT - - ALL RIGHTS RESERVED.

REVISIONS					
P	LTR	DESCRIPTION	DATE	DWN	APVD
	B	REVISE	09/96	-	-
	B1	REVISED PER ECR-16-016659	16DEC2016	RS	DR
	B2	REVISED PER ECO-17-004591	04APR2017	RS	DR



**AMP INCORPORATED
 CUSTOMER SERVICE SYSTEMS**

MAX RECOMMENDED OPERATING TEMPERATURE:
 170° C MAX [338° F]
 VOLTAGE RATING:
 N/A
 CIRCULAR MILL AREA:
 2.62-6.60mm² [5.180-15.100]
 SOLID OR STRANDED

FOR ADDITIONAL PRODUCT INFORMATION OR COPIES OF DRAWINGS AND TECHNICAL DOCUMENTS	PRODUCT INFORMATION CENTER 1-800-522-6752
FOR APPLICATION TOOLING INFORMATION	TOOLING ASSISTANCE CENTER 1-800-722-1111
FOR ORDER ENTRY	1-800-526-5142

THIS DRAWING IS A CONTROLLED DOCUMENT FOR AMP INCORPORATED. IT IS SUBJECT TO CHANGE AND THE CONTROLLING ENGINEERING ORGANIZATION SHOULD BE CONTACTED FOR THE LATEST REVISION.

500	LOOSE PIECE	130619
QTY	PACKAGE TYPE	PART NUMBER

THIS DRAWING IS A CONTROLLED DOCUMENT.		DWN G.ROBERT DEC.02.88	TE TE Connectivity		
DIMENSIONS: mm [INCHES]		CHK JJ.DESPRETZ 10-FEB-97			
TOLERANCES UNLESS OTHERWISE SPECIFIED: REMOVE BURRS, BREAK SHARP EDGES .015 R MAX		APVD JJ.REVIL 10-FEB-97	NAME SOLISTRAND, TERMINAL, SPADE 12-10 AWG, M5 STUD		
0 PLC ± - 1 PLC ± - 2 PLC ± - 3 PLC ± 0.127[.005] 4 PLC ± - ANGLES ± 5°		APPLICATION SPEC -	SIZE A2	CAGE CODE 00779	DRAWING NO C=130619
MATERIAL 1	FINISH 2	WEIGHT -	SCALE 3	SHEET 1 of 1	RESTRICTED TO -
CUSTOMER DRAWING			REV B2		