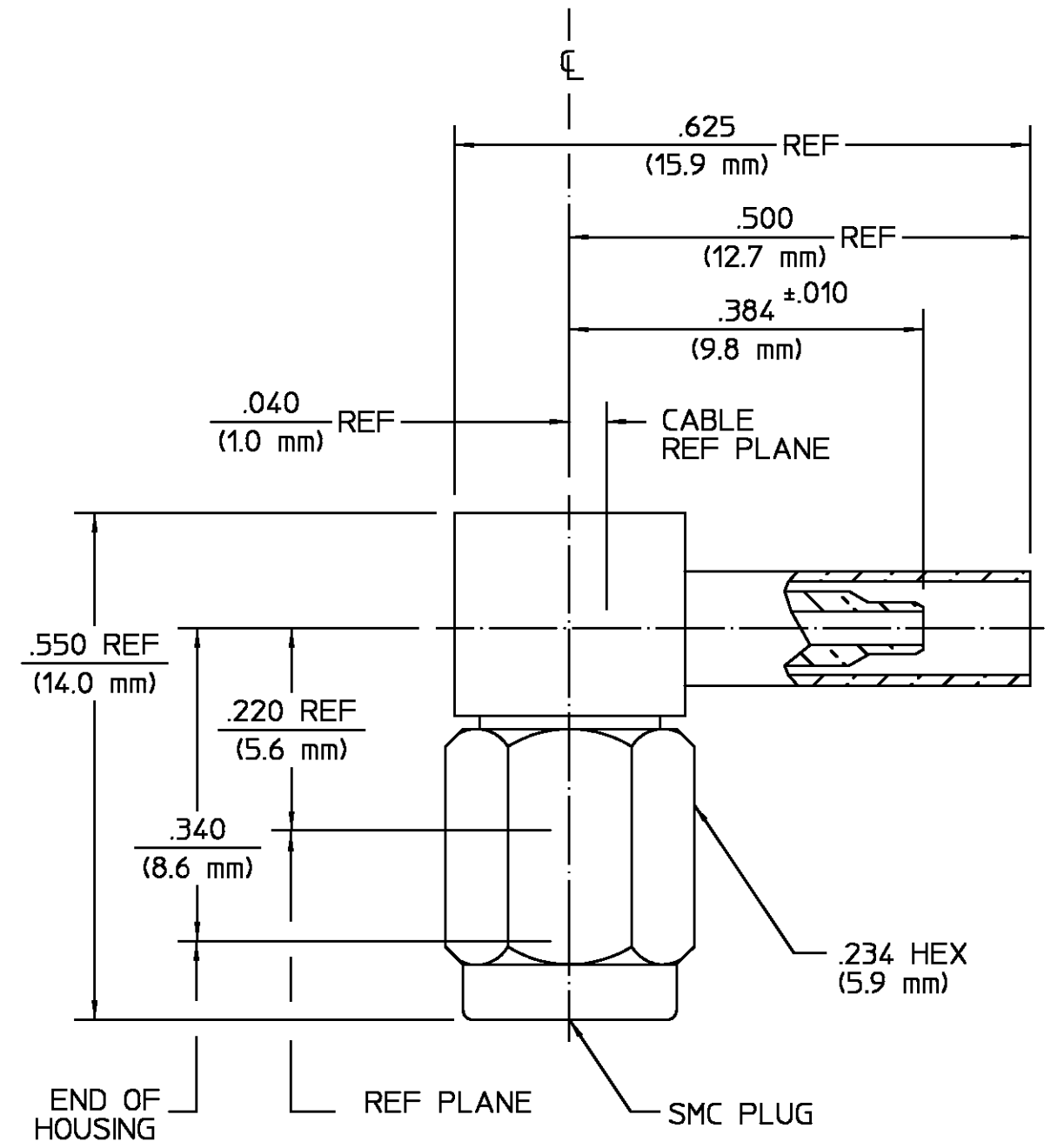


REVISIONS			
REV	DESCRIPTION	DATE	APPROVED
02 2	SEE GEN ECN 80-0084	FN 6/16/82	GAS 6/23/82
02 3	ADDED VIEW A	8/13/84	EC
03 0	MAJOR REDESIGN, DELETED SHRINK TUBING & VIEW A, CABLE ENTRY DIA .036 WAS .040, .028 WAS .043 & AP WAS 50-011 PER ECN 90-0399-4	KCM 9/7/89	<i>PJA</i> 1/15/90
03 1	.625 REF WAS .625, .500 REF WAS .500, .384±.010 WAS .384 PER ECN 90-0416	LROSS 5/3/90	BB 5/3/90



HOUSING COUPLING NUT CAP	BRASS PER QQ-B-626 COMP. 360	GOLD PLATE PER MIL-G-45204 OVER COPPER PLATE PER MIL-C-14550
DIELECTRIC	TFE FLUOROCARBON PER ASTM-D-1457, MIL-P-19468, AND FED. SPEC L-P-403	N/A
CENTER CONTACT	BERYLLIUM COPPER PER ASTM B196, ALLOY 173	GOLD PLATE PER MIL-G-45204 OVER COPPER PLATE PER MIL-C-14550
RETAINING RING	BERYLLIUM COPPER PER ASTM B186	N/A
FERRULE	SOFT COPPER ALLOY	GOLD PLATE PER MIL-G-45204 OVER COPPER PLATE PER MIL-C-14550
COMPONENT	MATERIAL	FINISH

- NOTES:
- DESIGNED FOR USE WITH RG178/U AND RG196/U CABLE
 - CAPTURED CENTER CONTACT

CABLE ENTRY DIAMETER MINIMUM	
HOUSING	.036
CONTACT	.028
FERRULE	.098

UNLESS OTHERWISE SPECIFIED
DIMENSIONS ARE IN INCHES
TOLERANCE ON
FRAC. DEC. ANGLES
± 1/64 ±.005 ± °

These drawings and specifications are the property of Omni Spectra Incorporated and shall not be reproduced or copied or used in whole or in part as the basis for the manufacture or sale of item(s) without written permission.

DRAWN BY JPD DATE 5/19/75
CHECKED BY RMF 5/29/75
APPD BY 5/29/75

USE ASS'Y PROCEDURE

408-04724
NO. AP. (50-043)

AMP Incorporated
140 Fourth Avenue
Waltham, MA 02451-7599

AMP

TITLE SMC RIGHT ANGLE
CABLE PLUG
CRIMP ATTACHMENT

SIZE B	CODE IDENT NO. 26805	5037-7196-09	REV 03 1
SCALE 6:1		SHEET 1 OF 1	